



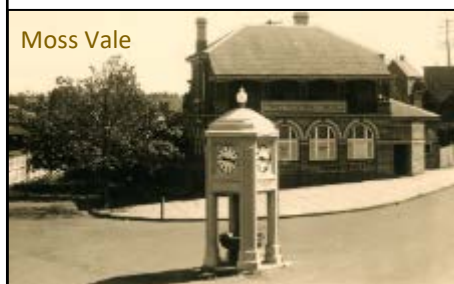
Bowral



Mittagong



Berrima



Moss Vale

# BERRIMA DISTRICT HISTORICAL & FAMILY HISTORY SOCIETY Inc.

Founded 1960

Located in the Wingecarribee Shire,  
Southern Highlands of NSW

ABN 29 362 616 937

## NEWSLETTER

No 562 August 2023



### From the President's Desk

The present Moss Vale Court House will be celebrating its centenary early in 2024. We recently attended a meeting at the Court House to discuss the involvement of our Society in presenting

a history of law and order infrastructure in this district since European settlement. The proposed presentation will explore the earliest barracks, lock-ups, police stations and court houses. Yet again this event will present another opportunity to showcase what a valuable resource we have in our Archives.

A very successful visit to "The Mill" in Moss Vale was recently enjoyed by 24 members of our Society, where the current owners generously opened their home and garden to provide us with a better understanding of its 170-year existence. See some photos on page 2.

The guest speaker at our August General Meeting will be Linda Emery who will present the history of the Catholics in Berrima and their Pugin designed church. See page 3 for an overview.

On pages 4, 5 and 6 you can read Philip Morton's final article on the history of our local dairy industry, delving into the developments in the 20<sup>th</sup> century. Moss Vale, Bowral and Mittagong all had their milk and/or butter factories due to the proximity to the major Sydney

market and served by the main southern railway line. These local factories, together with the Robertson Cheese Factory, became major suppliers, not only to the Sydney market, but to overseas markets as well. What was once one of the major industries of our district has today dwindled to a shadow of its former self.

The Maltings at Mittagong formed an important and iconic part of local history in the last century. A display of donated items can be seen at the entry to our Archives including wooden spades and original architectural plans. Over the past several decades many failed proposals have been put forward to restore and develop the original site. The current owners have prepared new plans and submitted them to Wingecarribee Shire Council for development approval. We will eagerly watch this space for any signs of construction. See page 6.

One of our highly successfully endeavours has been the selling of pre-loved books. In this issue on page 7 we include a list of 14 books for sale at very reasonable prices. Please get in early as the more popular ones go quickly. On the same page you can also see a list of publications that have been added to our library this year.

Ian Mackey

### GENERAL MONTHLY MEETINGS and EVENTS

#### AUGUST 2023

Thursday 24 August at 2:00pm

Speaker

Linda Emery on the Catholics of Berrima and their Pugin church

#### SEPTEMBER 2023

Thursday 28 September at 2:00pm

Speaker

David Collingridge, Chair, National Trust Southern Highlands Branch

AFTERNOON TEA is served following the speaker

The **Family History Interest Group** meets at the Mittagong Archives on the first Wednesday each month, at 1pm



## Moore Memorable Musings



### WHAT'S UP DOC?

I think we can all identify that the correct word for a medical condition sometimes seems too

pompous, too correct for words. I suppose this shows up my informality. In other words, the vernacular is my preference to the scientific.

Instead of a highfalutin name like Dupuytren's Contracture, I favour the title *Viking's Hand*. After years rowing across the Atlantic, I think that painful swelling deserves a strong name.

Bursitis comes to some of us in various forms and areas. However, we can identify *Nun's knee*, *Tennis elbow*, *Painter's shoulder*, *Student's elbow*, *Dicky knee*, *Weaver's bottom* and *Policeman's heel* a lot better.

The very common condition of Dermatophytosis is colloquially known as *Jock itch*, *Dhobi's itch*, *Athlete's Foot*, *Ringworm* or *Dishwasher's Dermatitis*. They are all related and known to us under the good old-fashioned name of *Tinea*!

For want of a better word, forms of Dystonia are better known as *Writer's cramp*, *Fiddler's neck* or *Musician's spasm*. Ouch! I think we all know what that feels like.

The official medical name for muscle cramp is - wait for it - Muscle Cramp! As we age, we become susceptible to cramps and spasms. Americans, for some obscure reason, call this *Charley-Horse*. I have another name for it too (Unprintable here).

Horticultural workers, artists, bricklayers and those who work with irritant chemicals can often be affected by the materials they work with. An allergic rash can develop on the skin called Contact Dermatitis which is sometimes known as *Gardener's* or *Bricklayer's Itch*.

Bakers, farmers and painters are known to suffer lung or breathing allergies by inhaling flour, dust, hay, drying paint fumes or solvents commonly called *Artist's Asthma* or *Thresher's Lung*.

We often hear about Erectile Dysfunction in men, particularly those who overdo the wee tippie.

The common name for this condition is, fittingly, *Brewer's Droop*.

*Widow's Peak* is a common natural v-shape hair growth. Famous examples are John Travolta, Leonardo DiCaprio, Chris Hemsworth, Marilyn Monroe, and Rita Hayworth.

At my last visit to my favourite hairdresser, Madam Doomière, I asked for a Widow's Peak style. She quoted me an eye-watering \$50.

After querying the price, considering my hair deficiency, she quickly responded; 'that will be \$10 for the cut plus a \$40 search fee!'

Bruce Moore

## BERRIMA DISTRICT MUSEUM

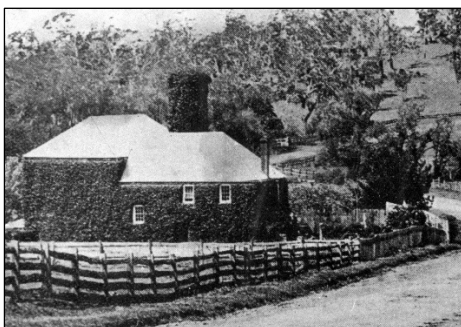
### OPEN: FRIDAY to SUNDAY

10.00am to 3.00pm

throughout the year including school and public holiday periods.

Groups welcome at other times by arrangement. Ph John 0434 623 402

Museum: Phone 4877 1130 or email [bdmuseum@bigpond.com](mailto:bdmuseum@bigpond.com)



**Our recent visit to *The Mill at Moss Vale*** was thoroughly enjoyed by all our members who attended. Jacki and Mike Brooks (3<sup>rd</sup> & 2<sup>nd</sup> from right above) generously opened their entire property and provided a lavish morning tea and guided tour. Members were enthralled by the history of the house, grounds and out-buildings, so well preserved and maintained by the current owners.

## Members' feedback by email

11 July 2023

Good afternoon. Just a note to thank you for the July newsletter, and to say how much I have enjoyed reading it. The whole issue from start to end was really engaging, however I found Bruce Moore's Nonsense Song Lyrics and his beautifully written article on Archie Moore most entertaining and interesting.

I would also like to congratulate Shylie Brown on her updated edition of *Life Behind the Bar*.

Best wishes to all, Robyn Arrowsmith

23 July 2023

I am enjoying Phillip Morton's series of articles on the History of Dairying. My (Hines) family ran a dairy farm for over a century.

Kind Regards, Judith O'Shea

## Archives' opening hours

Monday 10:00 am – 4:00 pm  
Tuesday 10:00 am – 4:00 pm  
Saturday 10:00 am – 1:00 pm



## August General Meeting speaker

Linda Emery

### THE CATHOLICS OF BERRIMA AND THE BUILDING OF THEIR PUGIN CHURCH

Thursday 24 August at 2:00pm

Linda will examine the experience of the Catholic community at Berrima in the mid-19<sup>th</sup> century, with a focus on the construction of the village's famous Pugin designed St Francis Xavier Church.



This is a repeat of the presentation that Linda gave in November 2022 at the St Clements Retreat Centre in Galong as part of the *Return to Tipperary* Conference.

The Conference program brochure outlined the talk under the title *Being Irish: being Catholic – St Francis Xavier Catholic Church, Berrima*, stating that:

“Despite the fact that somewhere between 20 and 25 per cent of Irish immigrants to 19<sup>th</sup> and early 20<sup>th</sup> century Australia were Protestant, there was a widely held belief that to be Irish was to be Catholic, and to be a good Catholic was to attend mass regularly.”



*A view of the Catholic Church at Berrima in 1921*

## Principles of Geology 1850 edition

A recent donation to the BDHS includes an item of some significance, being an 1850 publication of *Principles of Geology* by Charles Lyell which had been presented in 1854 to Robert Spier Willes, Rector of All Saints at Sutton Forest, when he was studying at Sydney University, by Professor John Smith who at the time was the foundation Professor of Chemistry and Experimental Physics at the University.

The donation also includes eight early postcards of Bowral and some miscellaneous research material regarding Robert Willis.

The donor, **Richard Bradshaw** OAM (born 1938), pictured, was a teacher in Sydney who retired to the Southern Highlands. As described on *Wikipedia*, he is an internationally renowned Australian shadow puppeteer and a one-time Artistic Director of the Marionette Theatre of Australia. He was awarded the Order of Australia for services to puppetry and the performing arts.



Our Street Names of Mittagong booklet lists Lyell Street, Mittagong, as being named after Charles Lyell.

## An acknowledgement and thanks

Our archivist, Linda Emery, receiving a most colourful bunch of flowers presented by the volunteers at the Archives on behalf of members as acknowledgement and thanks for her hard work and organisation of our recent highly successful June luncheon. The thanks

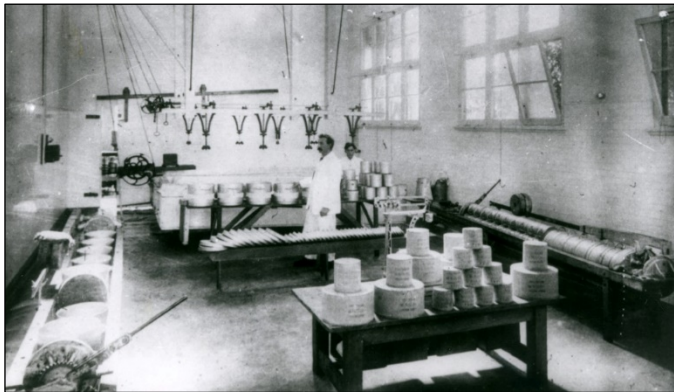


and acknowledgement were extended to all the amazing work Linda does for our Historical Society.

## A history of the local dairy industry 4ii

By the end of the 1890s, as outlined in last month's newsletter, local dairy farmers were receiving good prices for their fresh milk, railed daily from Bowral to Sydney by the Fresh Food & Ice Company (FF&I). As well, the Berrima District Farm & Dairy Company, a local farmers' cooperative which operated factories at Mittagong and Robertson, supplied butter, eggs, bacon, cheese and other commodities to Sydney, and also made good earnings from its butter that was exported to England.

FF&I also operated a creamery at Exeter, on the Vine Lodge property, it remaining in operation until 1932. As well, from 1902 butter and cheese were made at the Wingecarribee Butter Factory Co Ltd (pictured) on Oxley's Hill at Bowral, continuing until the 1940s.



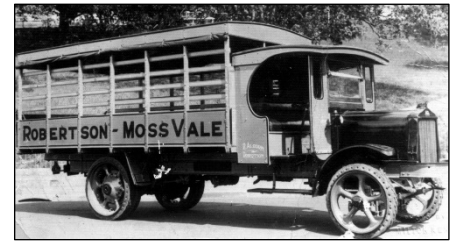
In reaction to Sydney companies raising and lowering the milk price at will without considering producers, those local dairy farmers who consigned milk directly to Sydney decided in 1896 at a Bowral meeting to form the Berrima District Milk Suppliers' Association, to better regulate the price of milk. Those involved in this smart move included Messrs Badgery (Exeter), Cordeaux (Berrima), Dawes and Osborne (Bowral), Coles and Oxley (Wingecarribee), Troy, Ottery and Loseby (Mittagong), Gibson (Roberton Park) and Fredericks (Kangaloon).

Increased demand during World War One greatly benefited Australian farmers, who were the chief suppliers of dairy products to Britain, with all surplus milk, butter and cheese exported at good prices.

By war's end, the Sydney-based FF&I Company was in fierce competition for milk supplies with the Dairy Farmers' Co-operative Milk Company which had been established in the Illawarra at Albion Park in 1900. This co-operative enabled coastal dairy farmers, dissatisfied with city middlemen's costs, to jointly market their milk and butter direct to consumers. Dairy Farmers' annual intake of milk exceeded that of FF&I for the first time in 1920.

Due to the increased rivalry and improvements in transport, complex arrangements developed locally in the early 1920s. Duplication of the Southern Railway enabled more reliable train services, and the introduction of motor vehicles allowed the more distant farmers to quickly transport fresh milk to Bowral station.

This prompted FF&I to entice some of the far-flung farmers to break from their local co-operatives and supply it with their milk for Sydney.



Not to be outdone, in 1922 Dairy Farmers established a milk depot/factory at Moss Vale, see details below. The company became a major player in the dairy industry, not just locally but nationally.

Before the Moss Vale depot opened, a major dairy industry expansion took place at Bowral. To extend its operations there, FF&I decided in 1920 to erect a new receiving depot with refrigeration units. The solid, two-storey brick building, opened in November 1921, had an entrance for unloading on Station St, and its lower floor had access



to the main rail line at the rear.

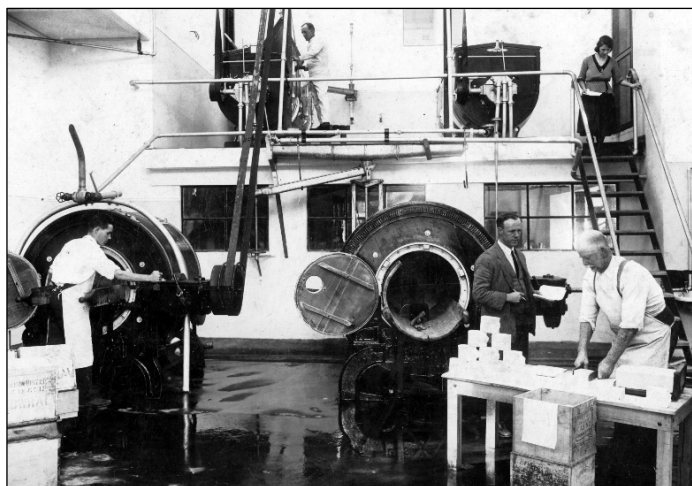
In February 1922 a meeting of the BDF&D Company's shareholder farmers, convened by its manager Arthur Knox, a Kangaloon dairy farmer, decided to erect a central butter factory and distributing centre (pictured below) at Bowral, also situated on Station St and right next door to FF&I's new milk depot.



The BDF&D co-operative closed its Robertson factory and in 1924 transferred butter manufacturing from Mittagong to its new Bowral facility, officially opened by the NSW Premier on 11 June that year.



In 1925 the BDF&D amalgamated with a Nowra-based co-operative distributor to constitute the Producers Distributing Society (PDS) Limited. As this was essentially a marketing organisation to handle the sale and distribution of farm produce, the BDF&D had to withdraw from the manufacturing side and leave that in the hands of the producers. After some negotiation, the recently erected butter factory at Bowral was offered for a modest sum to the dairy farmers who supplied it. They accepted this generous offer in October 1926 and formed the Berrima Co-operative Rural Society Ltd to own and operate the factory, where butter continued to be made.



The Berrima Co-op installed the best butter moulding and wrapping machinery in the 1930s, making its factory one of the most modern in NSW.

### **Dairy Farmers established at Moss Vale in 1920s**

While these developments were taking place at Bowral, Moss Vale was also set to become a major dairy manufacturing hub. This came about in 1920, when having become dissatisfied with the many arrangements then in place, the dairy farmer suppliers centred around Moss Vale decided they needed their own milk factory.

A delegation was sent to Sydney to seek options to directly market their milk in the city, either through FF&I or Dairy Farmers Co-op. Arrangements were finally made with Dairy Farmers, and a site on Lackey Rd close to Moss Vale Station was chosen for the milk factory, to be connected to the main line with a rail siding. Moss Vale Mayor, E B Hawkins, opened the factory (pictured top next column) in October 1922.

The first manager was Mr H J Bryen, and the factory was an instant success, with bulk fresh milk being railed to Sydney or separated for butter-making on 'block days' when no milk was sent to Sydney, with up to 30 tonnes of butter made on such days. Around 80 dairy farmers, from the localities of Robertson, Wildes Meadow, Avoca and Burrawang, as well as



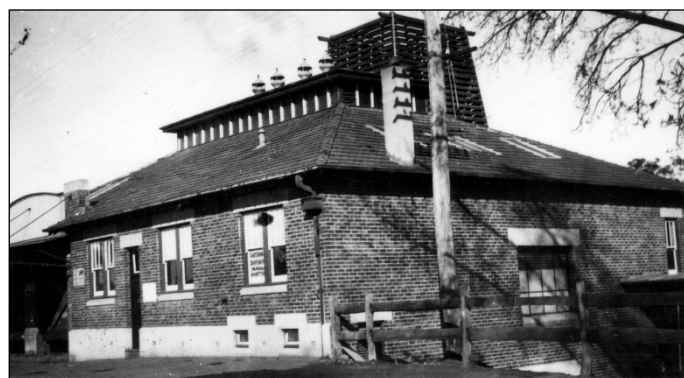
from around Exeter and Bundanoon, supplied milk to the Moss Vale factory operated by Dairy Farmers Co-operative. When the NSW Milk Board was set up in 1931, it appointed Dairy Farmers as Moss Vale agent.

The Berrima Co-op at Bowral was also riding a wave of success with around 140 suppliers, butter output reaching 292 tonnes in 1935. The Co-operative also opened a rural produce department in 1936 in a new building on Station St erected alongside the factory.

In 1953 the Co-op acquired FF&I's milk depot from Peters Milk, that company having bought it in the 1940s. This was a major milestone for the Co-op, fulfilling the long-held ambition of local farmers to own the depot that received and treated their milk.



In 1964 the Co-op introduced bulk pick-up of milk from refrigerated vats on the farms. Its greatest annual intake of milk was 18.54 million litres, in 1967. It ceased butter manufacture in 1971, all fresh milk being required for Sydney's increased demand.



In 1972 the Berrima Co-op created a wholly owned subsidiary, the Bowral Co-op (Trading) Society, to run its rural produce department. The premises were

extended into the butter factory site, providing a wide range of commodities and household items and attracting a district-wide clientele. Despite serious fire damage in 1980, trading continued there until 1993 when the Bowral Co-op moved to its present location on Kirkham Rd.

Road tankers took all local farmers' milk directly to Sydney from 1992 and the Berrima Co-op's depot closed. It is now Bowral's iconic Milk Factory Gallery.

At Moss Vale, the dairy trade prospered under Dairy Farmers, which became a major player throughout NSW. In 1955 the local branch acquired Robertson Co-operative Dairy Society Ltd, owner of a cheese factory and several stores. This Co-op had begun cheese making in February 1936 at a factory it built on the village's eastern end. During the first year its milk suppliers increased from 26 to 70 and it turned out 363,552 pounds of cheese, earning a good profit and winning every first prize at the NSW Dairy Produce Exhibition held in July 1936.

Dairy Farmers' continued the output of this quality Robertson cheese but ceased butter making at Moss Vale to concentrate on the milk trade. In 1956 it installed a pasteuriser and bottling unit and in 1962 purchased the Bowral and Burradoo Milk Supply Zone, establishing a depot in Bowral.

Having had up to 180 dairy farmer suppliers in the 1950s boom period, this dropped to 65 in the 1970s due to farm mergers and closures. In 1977 the Moss Vale depot was taking in about 300,000 litres of milk a week, of which about 65,000 litres were packaged and sold locally, a portion sent to the Robertson factory, and the remainder railed to Sydney.

Dairy Farmers introduced bulk pick-up of farmers' milk in 1966. In 1973 it distributed the district's first milk in cartons, rather than bottles, having installed a cartoning machine and homogeniser. It ceased cheese making in 1989 at Robertson, where the former cheese factory remains a major village landmark, and closed the Moss Vale depot after road tankers took the milk from 1992. Harvey Norman now occupies the site where the depot stood.

By the 1990s the Dairy Farmers Company was supplying 40% of Australia's fresh milk and exporting dairy products to 26 countries.

Some of the above details are drawn from material provided to the BDHS by member, the late Joe Ford, who served on the Berrima Rural Co-op Board.

The district's dairying industry, while much changed since the early days, still thrives today.

*Compiled by Philip Morton*

## New display of Maltings memorabilia

Just inside the entry to the Archives is a small display area, which now features some objects relating to the Maltings, an enterprise that played a major role in Mittagong's history.

In August 1899 the first malthouse on the site began producing malted barley, an essential ingredient in the beer-making process. Being away from the humidity of the coast yet close enough to the largest market, Mittagong was chosen as the location. It was also conveniently situated for transport access and had a good water supply. From 1905 the Maltings complex was owned by Sydney brewer Tooth & Company.

After operating successfully until the 1960s, a fire caused major damage to Malthouse 1. Production continued in Malthouses 2 and 3 until early 1980 when another major fire caused significant damage to Malthouse 3. In view of the high running costs and the ability to secure supplies from contract maltsters, Tooth & Co closed and sold off the complex.

A major clearance sale was held on site in November 1981 many pieces of equipment and materials being offered including shovels and augers, diesel engines, pumps and office equipment. Some pieces were taken by Tooth & Co for its museum at Kent Brewery and were later donated to the Powerhouse Museum.

The items on display are from the estate of Terry Brooks and donated to the BDHS in July 2022 by his daughter. The collection includes original spades, wooden spatulas, a copper template for Pale Malt, two elevation and several architectural drawings.



## Pre-loved books for sale to members

Provided by Carolyn Dougherty. To make a purchase please contact the archives by email or phone asap.

***A History of the Berrima District 1798-1973*** by James Jervis. Published 1986. Perfect condition. **\$20**

***A Place to Remember. Burraborang Valley***, 1957 by Claude N. Lee. Published 1964. **\$4**

***Beautiful Bowral: A Pictorial Celebration*** by Leah Day. Published 1997. As new **\$15**

***Celebrating 100 Years: Bowral Bowling Club 1914-2014*** by Yvonne Chapman. Published 2014. As new with owner's name on title page. **\$10**

***Centenary of St. Stephen's Church, Mittagong 1878 – 1978***. Published 1978. As new **\$4**

***A Chapter in the History of Mittagong: The Bush Fire of 1939***. Compiled by Marie A. Chalker. **\$4**

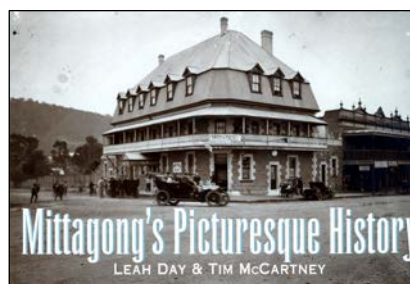
***Digging up the Past: Berrima District, Southern Highlands NSW***. Compiled by Carol Nolan. Published by the Berrima District Historical Society, 2008. Signed, as new **\$10**

***Four Pioneers of the Limestone Plains: Edward Smith; Mary Smith; Matthias Smith; William Kilby***. No date of publication. **\$5**

***Gardens of the Southern Highlands New South Wales 1828-1988*** by Jane Cavanough et al. Published by The Australian Garden Journal in 1988. 2 copies. Near perfect condition. One has owner's name on title page. **\$10**

***Joadja Creek: The shale oil town & its people 1870-1911*** by Leonie Knapman. Published 1988. Original hard cover edition. **\$10**

***Mittagong's Picturesque History*** by Leah Day & Tim McCartney. Published 1996. Chipped dust jacket but otherwise in good condition. **\$20**



***Stroud and the A.A. Co.*** Compiled by Stroud Shire Council. Published 1970. Rare book. **\$10**

***The Winds of Change. A History of Robertson A. & H. Society and Agriculture of its District***. Edited by Ian S. Giles. Published 1979. Excellent Condition. **\$8**

***Yerranderie: Story of a Ghost Town*** by Jim Barrett. Published 1995 Reprint 1998. As new condition. **\$10**

## New additions to the BDHS Library

Here below is a list provided by Carolyn Dougherty of new books added to the library since early 2023.

***A Struggle for Relevance: The Garden at Harper's Mansion*** by Chris Thompson. Published 2022. Library Shelf No. REF. 13/296

***Report of the Council of Education upon the Condition of the Public Schools for 1872 (NSW)***. Published 1873. REF. 11/67 Vol. 1

***Report of the Council of Education upon the Condition of the Public Schools for 1873 (NSW)***. Published 1874. REF. 11/67 Vol. 2

***Once Upon A Hume: the traveller's companion***. Vol. 3 & Vol. 4 by Stephen Gard. Published 2019 and 2020 respectively. Held in General Collection/GAR Vol 3, 4

***An Account of the Gronos in Mittagong NSW: Thomas Grono, Edwin Grono & Alfred Grono Families***. Compiled by Deborah McDougall. Published 2022. REF. 01/227

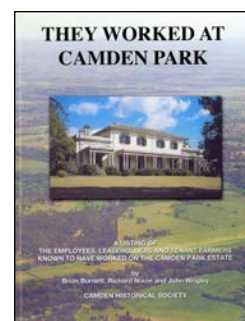
***Vietnam War Memorial Cherry Tree Walk***. Compiled by Grahame Tooth. Published March 2023. GC/TOO

***Leonard Hart B.V.Sc., F.A.C.V.Sc., H.D.A. (Hons.) An Autobiography 1908-2002***. Edited and produced by Dr Diana L. Hart. Published 2002. 2 copies. REF. 01/228 and 24/126

***What's in a Name: The Streets of Mittagong***. Published 2022 by Berrima District Historical & Family History Society. REF. 13/297

***What's in a Name? The Streets of Moss Vale, Sutton Forest, Berrima and New Berrima***. Published 2023 by Berrima District Historical & Family History Society. REF. 13/298

***They Worked at Camden Park: A Listing of employees, lease-holders and tenant farmers known to have worked on the Camden Park Estate***. Written by Brian Burnett, Richard Nixon and John Wrigley. Published by Camden Historical Society, 2005. REF. 25/61



***Land between Two Rivers: a historical and pictorial survey of Shellharbour Municipality*** by Jim Derbyshire and Dianne Allen. Published 1984. REF. 27/81

***Why Mittagong? – the people and circumstances that brought the Marist Brothers to Lower Mittagong in 1905*** by Peter Rodney. Published 2023. REF. 13/299.

## Berrima District Historical & Family History Society Inc

PO Box 131 Mittagong NSW 2575 ☎ Telephone (02) 4872 2169

email: bdhsarchives@gmail.com ☎ web: [www.berrimadistricthistoricalsociety.org.au](http://www.berrimadistricthistoricalsociety.org.au)

- ARCHIVES:** Cnr Old Hume Highway and Bowral Road, MITTAGONG.  
OPEN: Mondays, Tuesdays 10am-4pm and Saturdays 10am-1pm. Closed Public Holidays.  
Library collection contains reference books, journals and a general collection.
- MUSEUM:** Market Place, Berrima. Tel: 02 4877 1130. Email: [bdmuseum@bigpond.com](mailto:bdmuseum@bigpond.com)  
AT PRESENT, OPEN: 10.00am to 3.00pm, Fridays to Sundays.  
This includes during school and public holiday periods.
- MEMBERSHIP:** Any person wanting to join the Society may do so at any stage during the year by completing a form and paying the appropriate fee. Joining Fee \$10.00 – Single \$25.00 – Family \$35.00.
- AFFILIATIONS:** Royal Australian Historical Society, Museums Australia Inc and NSW Association of Family History Societies.

If undelivered return to:  
Berrima District Historical & Family History Society Inc  
PO Box 131  
MITTAGONG NSW 2575  
Berrima District Historical & Family History Society Inc  
Newsletter  
Print Post Approved  
PP100001055

PRINT POST  
100001055

POSTAGE  
PAID  
AUSTRALIA

### BERRIMA DISTRICT HISTORICAL & FAMILY HISTORY SOCIETY Inc.

<b>President</b>	Ian MACKEY	<b>Archivist</b>	Linda EMERY
<b>Snr Vice President</b>	Linda EMERY	<b>Museum Coordinator</b>	John SCHWEERS
<b>Jnr Vice President</b>	Jenny FROST	<b>Membership</b>	Peg HARVEY
<b>Hon Treasurer</b>	Patricia DORIS	<b>Newsletter Editor</b>	Philip MORTON
<b>Hon Secretary</b>	Peg HARVEY	<b>Conservation Team</b>	Denise MACKEY
<b>Research Team</b>	Frank MITCHELL, Carolyn DOUGHERTY and Janet BLACK		

**Management Committee:** President, Vice Presidents, Secretary, Treasurer and members Denyse Barker, Rhonda Brown, Jenny Cox, Ros Dale, Carolyn Dougherty, Philip Morton

**Museum Sub-Committee:** Sylvia Carless, Ros Dale, Harlan & Lyn Hall, John Schweers, Bud Townsing, Harold Wall, Michele Woods