



Bowral



Mittagong



Berrima



Moss Vale

BERRIMA DISTRICT HISTORICAL & FAMILY HISTORY SOCIETY Inc.

Founded 1960

Located in the Wingecarribee Shire,
Southern Highlands of NSW

ABN 29 362 616 937

NEWSLETTER

No 555 December 2022



From the President's Desk

Our Annual General Meeting was held on Thursday 24 November. Most of the committee members were returned to their positions with one retirement from the Management Committee

being Kerry Bunker. We wish Kerry all the best for the future. The Museum Sub-Committee has remained virtually unchanged except for John Schweers who has been re-elected to the committee. A special thanks to Gloria Williams for acting as the returning officer at our meeting. A full list of all positions is on the back page of this newsletter.

At the conclusion of the meeting Georgina Chaseling gave a very entertaining presentation detailing her experiences as one member of an all-women's team to complete the London to Sydney Car Rally in 1993.

Our fully restored grandfather clock is now on show in our first-floor foyer. A photo is on page 2 showing the clock and its restorer Peter Donnan.

On page 3 we publish another list of donated and ex-library books for sale to members at discounted prices.

Artist/Printmaker Tony Ameneiro, a local resident and Society member is featured on pages 4 and 5. Tony is an acclaimed artist, and his work is held by the British Museum and many Australian galleries. His work is influenced by artist Fred Williams who created landscapes of the Nattai Valley.

Wendy Hamilton is the author of *The Spot the War Forgot* about the WW1 Berrima Internment camp. On page 6 is an overview by Wendy of the different uses Berrima Court House was put to by the internees during their stay from 1915 to 1919. Its small but significant role is often overlooked due to the primary focus of their prison life being the gaol and riverbank.

To continue with the courthouse theme, a brief history of the district's "other" courthouses, by Philip Morton, is provided on page 7. These were built at Mittagong, Moss Vale, Robertson and Bowral.

As our Society prepares to enter another year there is no expectation that the renovations and repairs to the Mittagong Memorial Hall and our proposed move to occupy the first floor will occur anytime soon. Once again funding is the stumbling block with one grant application unsuccessful this year. Ongoing applications by Council will occur.

Our Berrima District Museum will be open during the Christmas school holiday period from Friday to Sunday each week except for Christmas Day.

This is our last newsletter for 2022 with our next issue coming out in February. Our next general meeting will be held on the fourth Thursday of February 2023.

I would like to wish all members a Merry Christmas and a happy and healthy 2023.

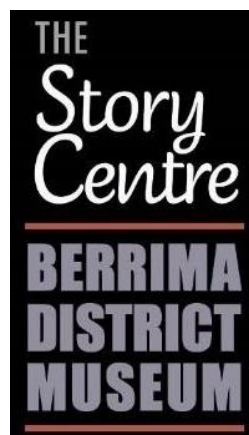
Ian Mackey

GENERAL MONTHLY MEETINGS and EVENTS

DECEMBER 2022 **Thursday 15 December at 12:00 for 12:30pm**
Christmas Lunch at Scottish Arms Hotel, East Bowral

JANUARY 2023 **No meeting**

The **Family History Interest Group** meets at the Mittagong Archives on the first Wednesday each month, at 1pm. Next meeting in February 2023



Moore Memorable Musings



DIGGING UP THE RELLOS

Stories I told my children, somewhat exaggerated, about the concocted adventures of our

family slowly grew into the impulse it has become today.

Some would argue that it's an obsession to discover the family's true story.

While my father was alive, we began listing names on the back of an advertising flyer. Starting with my sister and I we drew a T to my father and his siblings. From there another T illustrated his folks and their siblings. No one was sure of their names or ages. That's when the fun began.

The aim of studying and researching one's family history is twofold.

Firstly, it becomes a quest to find names, dates places (like collecting engine numbers) to make a significant chart. This makes you feel very important that you're connected to so many people, even though they're dead.

Secondly the next step is to try and discover an unclaimed castle, fortune or title off which you can live. Perhaps you could be related to William the Conqueror, King Canute or even Roger Moore?

What we did find was that were a lot of 'premature' births so close to a marriage. That elusive pot of gold wasn't hidden or inherited after Great Uncle Albert left the goldfields.

Quickly discovering that nobody arrived in this country *with* a fortune, most arrived penniless, disgruntled with their previous homeland and full of hope. They looked forward to a better life.

I don't blame them after spending six months on a cramped sailing ship sharing a bathtub, corned meat and a wooden palliase. I'm sure I would feel full of hope too, if I hadn't already thrown myself overboard!

In most cases we can humbly thank our forebears for adventuring, either willingly or not, across the world and establishing such a splendid country in which to live. The original boat-people!

It's interesting to note that after the last transported felons were settled in Australia, their offspring became the most law-abiding and upright citizens in the world.

Today we are blessed with travelling to most places on the globe in under a day. We are fortunate to be able to visit the spot families left behind. Maybe to find more relatives and arrive home feeling contented with your lot.

The world and life move on. This story like history itself, will never finish.

Now, where did I put Aunty Lena's details?

Bruce Moore

Our Christmas Lunch

**Thursday 15 December 2022
at 12:00 for 12:30pm**



**Celtic Room,
Scottish Arms
Hotel
East Bowral**



Lunch will be a traditional Christmas two-course meal of main and dessert, with tea and coffee provided.

There will be our usual door prizes and raffle, and Linda Emery will host a trivia quiz. Cost is **\$50** per person.

If you haven't already done so, please contact us immediately to book and pay if you wish to attend.

Keeping us 'ticking along'



We are grateful to Peter Donnan for his time and skill in restoring our recently acquired Grandfather Clock to full working order. The clock graces our upstairs meeting room foyer and will soon be provided with a panel display explaining its history.

Peter is a former headmaster who retired to the local district and whose keen interest in all aspects of clock workings and repairs has become more than just a hobby.



Linda Emery with Ian and Denise Mackey at the 'Return to Tipperary' Seminar held at Galong on 19/20 November, where Linda was one of the key speakers

More books for sale to members

Our Librarian, Carolyn Dougherty, has put together another list of books for sale at a discount, being either donations or superfluous to our requirements.

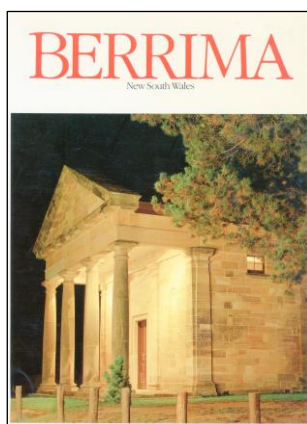
Please contact us without delay if you want to buy any of these books, perhaps as a Christmas gift for someone. If you live locally, you may collect and pay for your selections at the archives during opening hours. Alternatively, phone 4872 2169 or email the Society at bdhsarchives@gmail.com and we will advise cost of postage and payment methods.

BOOKS FOR SALE – LIST FOUR, DECEMBER 2022

Barrett, Jim. **Shack Country & the Old Burragarang.** Published 1990. Soft cover. Some wear. **\$10**

Beautiful Bowral, A Pictorial Celebration by Leah Day. Publ. 1997. Hard Cover. Excellent condition. **\$10**

Berrima, New South Wales. Published 1984. Soft Cover. Text by Barbara Glover, Photography Gary McCullough, Ian Roberts. **\$14**



Bowie, Ian. **Wingecarribee, Our Home. A Geographical Interpretation of the Southern Highlands of New South Wales.** Published 2006. Soft cover. Excellent condition. **\$5**

Burke, David and Ferguson, Anne. **The World of Betsey Throsby: Discovering Australia's Colonial Past in the Southern Highlands of New South Wales.** Publ. 1994. Soft cover. Excellent condition. **\$10**



Cavanough, Jane et al. **Gardens of the Southern Highlands, New South Wales 1828 – 1988.** Published 1988. Soft cover. Very good condition. **\$8**

Centenary of Australia's First Iron Smelting at Mittagong, New South Wales. Souvenir of Celebrations, October 1 to 4, 1948. **\$20**

Else-Mitchell, R. **Early Industries in the Mittagong District.** Published 1981. Soft cover. Excellent condition. **\$5**



Fitzroy Falls and Beyond. A Guide to the Fitzroy Falls – Bundanoon, Shoalhaven – Ettrema Wilderness, Northern Morton National Park and Bungonia State Recreation Area. A Budawang Committee Publication. Published 1988. Soft cover. Good condition. **\$8**

From Jordan's Crossing to Bundanoon: The Growth of a Highland Village. Published by Bundanoon History Group. Soft cover. Very good condition. **\$5**

General Muster of New South Wales 1814. Published by ABGR in association with SAG, 1987. Hard cover, Excellent condition. Some writing on title page. **\$40**

General Musters of New South Wales Norfolk Island and Van Diemen's Land 1811. Published by ABGR in association with SAG, 1987. Short notes on first blank page. Hard cover. Very good condition. **\$40**

General Return of Convicts in New South Wales 1837. Published by ABGR in association with SAG, 1987. Hard cover. **\$80**

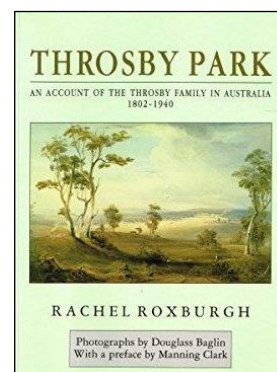
Jervis, James. **A History of the Berrima District 1798 – 1973.** Published 1986. Hard cover. Good condition. **\$5**

Mooney, Tim. **Southern Highlands Discovery.** Published 1991. Hard cover. Excellent condition. **\$10**

Musters of New South Wales and Norfolk Island 1805 – 1806. Published by ABGR in association with SAG, 1989. Very good condition, some writing first page. Hard cover. **\$40**

Price, Leslie. **Tales of the southern Highlands.** Published 1991. Soft cover. Good condition. **\$5**

Roxburgh, Rachel. **Throsby Park. An Account of the Throsby Family in Australia 1802-1940.** Published 1989. Soft cover. Excellent condition. **\$10**

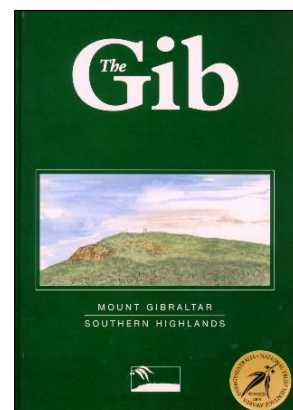


Taylor, Gregory Am, OAM. **What's the Significance of ...? A Reference History of The Presbyterian Parish of Mittagong, Mittagong-Bowral, Bowral-Mittagong 1868-1993.** Soft cover. Excellent condition. **\$5.**

The Gib, Mount Gibraltar, Southern Highlands

Published by the Mount Gibraltar Landcare and Bushcare Group, 2007.

Hard cover. As new. **\$30**



A local BDHS member wins accolade

Printmaker Tony Ameneiro lives in the local district and has been a member of the BDHS since 2006, with local history being an integral aspect of his creations.

In early November this year the *Southern Highland News* reported that Tony's attention to detail and ability to capture a renowned part of the Highlands had been awarded a prestigious accolade.

From the paper: "His print *Nattai River Landscape – Sloping Ground Diptych*, created in 2021, was selected as the winner of the *Swan Hill Print Drawing Acquisitive Awards*. It is being exhibited in the Swan Hill Regional Art Gallery, in Victoria, along with 52 other finalists. The biennial competition champions innovative print-makers and drawers nationwide. The print is a reflection on Australian landscape artist Fred Williams' visit to the Nattai River in 1957, which inspired his future paintings."

Prior to its win, the print was exhibited locally in 2021 at Sturt Gallery, along with other artworks that Tony created to pay tribute to Williams' visit and the Nattai River's history. Extracts from a catalogue of the exhibition are provided on the next page.

Tony provided our Society with a brief biography:

Tony Ameneiro was born in London in 1959 to Spanish parents and emigrated to Australia in 1968. He studied art at Alexander Mackie College of Advanced Education Sydney from 1978 to 1981. He began exhibiting professionally in 1981 and has shown his work regularly since. He works primarily as an artist-printmaker incorporating his drawing practice across the areas of etching monotype and lithography.

The 2022 Swan Hill Award was his third national accolade, being named the *Fremantle Print Award* winner in 2007 and the *Geelong Acquisitive Print Award* winner in 2009. He has also been a three-time finalist in the *Dobell Drawing Prize* at the Art Gallery of NSW, was represented in 2005 at the Biennale Jogja VIII in Yogyakarta, Indonesia and in 2014 in the International Print Biennale (UK). He was also twice chosen by the Print Council of Australia as their commissioned print artist.

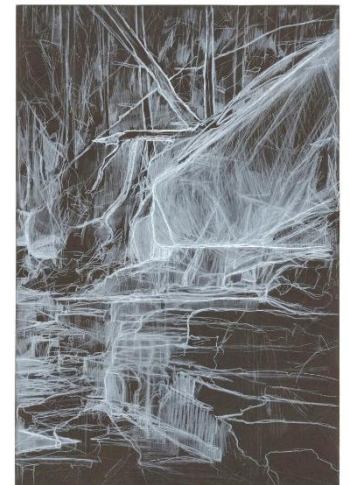
His work is held by major institutions, including the British Museum, National Gallery of Australia, Art Gallery of NSW, Queensland Art Gallery, Art Gallery of South Australia and the State Library of Victoria. He has printed professionally for several prominent Australian artists including Tracey Moffatt, Anne Judell and Ben Quilty.

From the Swan Hill Regional Gallery website:

Tony Ameneiro
printing
*Nattai River
Landscape
chine-colle-
659x1024*

Q: How does the work relate to your broader practice?

A: The work continues my ongoing interest in reflecting on landscape close to home, this time reflecting on the work of a past artist viewed through a contemporary lens. Looking at the same landscape Williams worked in, viewed now some 65 years later, with all the changes of context - climate change, land use, ownership and degradation issues.



Q: How does the exhibition manifest – what do visitors experience?

A: My work is a diptych; two large drypoint prints, drypoint and roulette from polycarbonate plates. The prints were worked from A3 and A2 sized colour pencil drawings created *plein air* in Nattai River valley.

BDHS INSERT:
For readers not familiar with the works of Fred Williams, shown here is his 1958 painting 'The Nattai River' held in the National Gallery of Victoria.



LANDSCAPE WITH ROCK Tony Ameneiro

Former exhibition at Sturt Gallery, Mittagong,
1 August-19 September 2021 (*the text below is from
the exhibition catalogue article by Dr T A Middlemost*)

The works portray the aptly titled property 'The Craggs' in the Southern Highlands. In 1957 the artist Fred Williams, who was recently off the boat from England, was invited by John and Joan Stephens to paint the property's steep and rugged cliff faces.

One such Williams work held in The Art Gallery of NSW: *Landscape with Rock*, 1957-58, oil on hard-board 61.3 x 85.8cm, AGNSW 63.1983, is this exhibition's namesake, and depicts a twenty-foot-high boulder which is most likely situated thirty minutes' drive from Mittagong, and a further thirty minutes bushwalk down the Nattai River Valley.

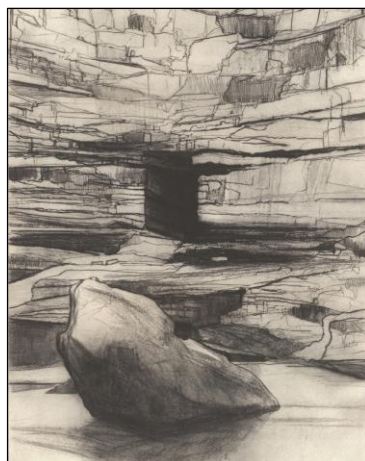
Tony Ameneiro, a local resident, being aware of Fred Williams' connection with the area, fortuitously met Joan Stephens in the early 2000s. She gave him a copy of her late husband's unpublished memoir, which documents Williams stay at their property. Ameneiro was inspired to investigate the landscape and investigate Williams prints at the AGNSW, from the 1957-1963 period.

He eventually initiated the Southern Highlands Printmakers project: "Standing on the Shoulders..." [of giants], which later became the substantial touring exhibition: "Continuum": Twenty-three artists within the exhibition made prints inspired by the work of past artists who had a connection to the Southern Tablelands region of NSW. The two monotypes: '*Nattai River Landscape with Rocks*' (The Craggs) 1 and 2, 38 x 50cm, 2017, were exhibited by Ameneiro as part of Continuum.

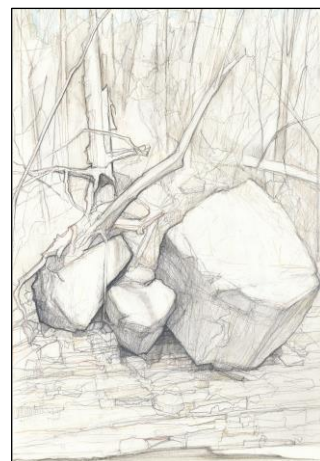
Tony Ameneiro captured vistas of 'The Craggs' sixty-four years after Williams first visit, mindful of the previous presence of the giant of Australian bushland painting, particularly reflecting on the previous artists printmaking, how Williams "saw the place through his etchings and then put those visions down on the plate", but not for the purpose identifying the former artists particular vistas. Ameneiro had an eye to the changes in the environment, his work both depicts what is in front of him but is also imbued with contemporary views on land ownership and environmental responsibility.

The immense and ancient features of the landscape echo the themes explored: any re-evaluation of a landscape must now be viewed through the filter of human influenced climate change as an existential threat. The works within 'Landscape with rock', are no mere documentation of a degraded landscape or

habitat. Climate change is not conspicuously documented, but hinted upon, embedded, for the careful observer to discover, similar to the hourglass, or small vanitas skull, hidden in a large Dutch canvas.



Old Coal Hole-Nattai River 2021



Sloping Ground 2021

In Ameneiro's work, carefully delineated massive, rocky boulders, the size of houses are preposterously situated on absurd vertical slopes, possibly a metaphor for the precarious nature of our suffering environment, definitely a device to create unease in the viewer. Enormous rocky escarpments lined with coal seams are holed and excavated by nineteenth century coal mining activities. Old, gnarled trees are portrayed uprooted – once venerable soldiers in the fight for climate change – now dead, fallen, and exposing their complex root systems.

Fallen Tree 2021 Colour pencil



While all the Williams paintings mentioned share a colour and feeling with Cezanne's golden landscapes, the latter oil, *The Nattai River*, 1958, is much more of the nature of the works in Ameneiro's exhibition: sheer, cracked sandstone cliff faces act as a pause for the viewer. Densely thicketed, vertical trees provide a complex, iterative, background, and the base of the picture is stabilised by the robust depiction of water, as solid as any basalt outcropping.

Ameneiro, like Fred Williams, has a preference for printmaking. The prints by both artists inform the painting and vice versa. I'm aware of heavily inked etching plates by Williams but not monotypes. Ameneiro's 'Landscape with Rock' series is heralded by the studio-based medium of monotype. Both artists drew 'en plein air' but the remote nature of the landscape necessitated any large painting work to be studio based.

– compiled by Philip Morton with thanks to Tony A

Partners in War and Peace at Berrima

The Gaol and Courthouse

**A history provided by Wendy Hamilton,
author of 'The Spot the War Forgot'
(about the WWI Berrima Internee Camp)**

Berrima courthouse and gaol were built in 1838 and 1839 respectively. Right from the start, they were designed to work in tandem, but within ten years the partnership was reduced to local affairs when the Circuit court moved to Goulburn, and in 1888 the last District Court hearing was held at Berrima. By the turn of the century, the gaol was also closed and it seemed the partnership between the two was over.

War brought the partners back to life

Between 1915 and 1919 over 300 German mariners were interned in Berrima. While the gaol and the riverbank were the primary focus of prison life, the courthouse played a smaller but significant role.



On ordinary days, the courtroom was the Reading Room. It housed the entire library of the German Club that the Singapore internees brought with them when they were interned – an extensive collection of classical and general works.

Other rooms were used as club rooms and classrooms where English, nautical and other lessons were taught. In addition, a piano was installed in the

prisoner's holding cell, and piano lessons were held there for 20 students (including two of the camp's children). On Sundays, church services were held in the courtroom.



Confirmation of Gertrude Brauns, Berrima NSW

On special occasions, such as Gertrude Brauns' confirmation and the christening of Sylvia Machotka (two of the camp children), the courtroom was festooned with garlands of native plants and flowers, and on Christmas and the Kaiser's birthday, the courtroom was transformed into a banqueting hall.

The Courthouse Housed a Select few

Not every internee was locked in the gaol overnight. Three titled men, their two servants and a small dog lived in the back rooms of the courthouse. The three aristocrats were given the privilege of not being locked in. They never abused their privilege, but their two servants took advantage of the lax rules to escape. They ran away to the Blue Mountains and were recaptured in Orange, when they went to a police station to complain they had been robbed in a card game.

The End of the Partnership

The war formally ended with Germany signing the peace treaty in June 1919; with the departure of the internees, the Berrima gaol and courthouse went their separate ways again. While the gaol and the huts along the riverbank make fascinating history, let us not forget the important role the Berrima courthouse played during WW1.

* * *

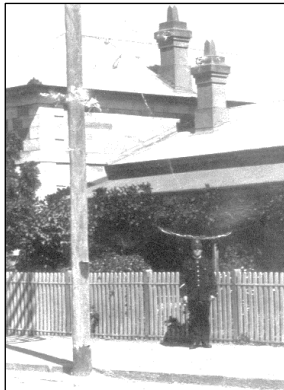
Wendy Hamilton is currently preparing a new edition of her book 'The Spot the War Forgot' which will include a selection of Internee photographs obtained from the BDHS. The current edition of her book may be purchased at our museum in Berrima.

The District's other Court Houses

The Southern Railway opened through the district progressively from early 1867, by-passing Berrima and new townships grew around stations at Bowral, Mittagong, Moss Vale and Bundanoon. Robertson became a town centre on the district's eastern side.

As the towns developed, so also did the need for law and order, until then entirely based at Berrima. Police Stations and Courts were opened at Mittagong, Moss Vale, Robertson and Bowral, with Burrawang and Bundanoon gaining police stations only.

Mittagong was the first after Berrima to obtain a police station, built in 1868 at the corner of Regent and Station Sts. In 1885 it was enlarged, and a one-storey sandstone Court House erected alongside. The Mittagong precinct was renovated in 1901 and served until the Court closed in 1962 and the police station in the 1990s. The buildings now house the Highway Patrol.



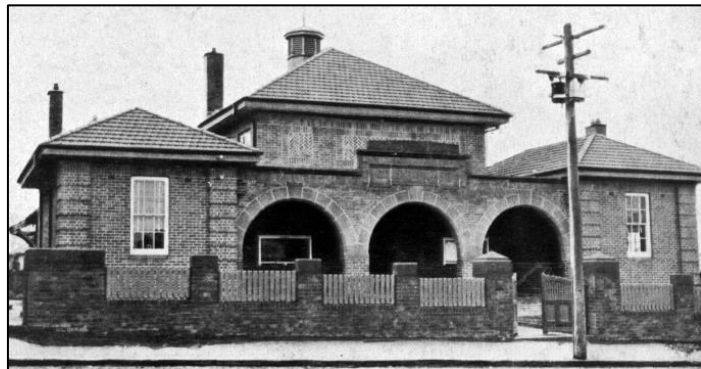
At Moss Vale, from 1877 a constable and Court clerk occupied a weatherboard building on Argyle St. New police and court premises were erected in 1880 out front of the railway station on Bay St. The solid brick buildings were of pleasing aspect, set in a garden and with a lock-up keeper's quarters, yards and stables.



In addition to Petty Sessions, the town gained the next level of the judiciary in November 1881 when the District Court was moved from Berrima to Moss Vale "which shall exercise jurisdiction in and over the existing district". In 1901, due to a decline in business at Berrima, the district's police headquarters were also relocated to the Moss Vale precinct.

Unfortunately, Moss Vale's fine police and court precinct had to be demolished in 1914 to make way at the station for a new railway line, buildings and platform enlargements as part of duplication of the Southern Railway from a single to a double track.

It was noted in the *Robertson Advocate* that "the picturesque police station will disappear . . . all the land in the vicinity being required for railway lines, yards, sidings and buildings". As this occurred during the war years, the Moss Vale police and courthouse functions had to make do with temporary premises until the early 1920s when a new cottage style police station and an imposing Court House were built.



The Court House was opened in January 1924. Other than minor renovations and a glassed-in front, the building remains essentially the same today and is now the district's only still-functioning Court House.

At Robertson, a police station opened in 1881 and Petty Sessions commenced in 1888. A late-Victorian style Court House with residence was built in 1891 and a rear paddock notified as a police reserve in 1900. The precinct still serves as a police station.

At Bowral, a police station and residence, built at the corner of Wingecarribee and Bendooley Sts, opened in 1882. On the same site, Bowral Court House was constructed during 1895-96. It was built by local man Alfred Stephens to a stylish late Gothic design by the government architect, using trachyte quarried at Mt Gibraltar with sandstone details and gable roofs. Its opening in May 1896 was celebrated by residents as a 'coming of age' for the town.



Bowral's Court House ceased handling legal matters in 2005 and the building was sold.

At Moss Vale, the old 'cottage' police station has now been replaced with a large Police Centre that serves the entire Wingecarribee Shire community.

- compiled by Philip Morton

Berrima District Historical & Family History Society Inc

PO Box 131 Mittagong NSW 2575 ☎ Telephone (02) 4872 2169

email: bdhsarchives@gmail.com ☎ web: www.berrimadistricthistoricalsociety.org.au

- ARCHIVES:** Cnr Old Hume Highway and Bowral Road, MITTAGONG.
OPEN: Mondays, Tuesdays 10am-4pm and Saturdays 10am-1pm. Closed Public Holidays.
Library collection contains reference books, journals and a general collection.
- MUSEUM:** Market Place, Berrima. Tel: 02 4877 1130. Email: bdmuseum@bigpond.com
AT PRESENT, OPEN: 10.00am to 3.00pm, Fridays to Sundays.
This includes during school and public holiday periods.
- MEMBERSHIP:** Any person wanting to join the Society may do so at any stage during the year by completing a form and paying the appropriate fee. Joining Fee \$10.00 – Single \$25.00 – Family \$35.00.
- AFFILIATIONS:** Royal Australian Historical Society, Museums Australia Inc and NSW Association of Family History Societies.

If undelivered return to:
Berrima District Historical & Family History Society Inc
PO Box 131
MITTAGONG NSW 2575
Berrima District Historical & Family History Society Inc
Newsletter
Print Post Approved
PP100001055

PRINT POST
100001055

POSTAGE
PAID
AUSTRALIA

BERRIMA DISTRICT HISTORICAL & FAMILY HISTORY SOCIETY Inc.

President	Ian MACKEY	Archivist	Linda EMERY
Snr Vice President	Linda EMERY	Museum Manager	Sub-Committee
Jnr Vice President	Jenny FROST	Membership	Peg HARVEY
Hon Treasurer	Patricia DORIS	Newsletter Editor	Philip MORTON
Hon Secretary	Peg HARVEY	Conservation Team	Denise MACKEY
Research Team	Frank MITCHELL, Carolyn DOUGHERTY and Janet BLACK		

Management Committee: President, Vice Presidents, Secretary, Treasurer and members Denyse Barker, Rhonda Brown, Jenny Cox, Ros Dale, Carolyn Dougherty, Philip Morton

Museum Sub-Committee: Sylvia Carless, Ros Dale, Harlan & Lyn Hall, John Schweers, Bud Townsing, Harold Wall, Michele Woods