



Bowral



Mittagong



Berrima



Moss Vale

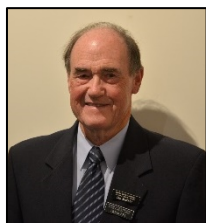
# BERRIMA DISTRICT HISTORICAL & FAMILY HISTORY SOCIETY Inc.

Founded 1960

Located in the Wingecarribee Shire,  
Southern Highlands of NSW

## NEWSLETTER

No 503 March 2018



### From the President's Desk

While I sit here listening to the rain falling I feel a sense of relief that finally, after months of drought conditions, we are getting good soaking rain. You can see the ground soaking up the moisture like a big dry sponge, and trees and shrubs starting to glisten again.

Occasionally I am asked about the demographics of our membership, such as how many members we have and where do they live. Having obtained a copy of our membership list from Secretary Peg, I sat down on this wet Sunday and crunched the numbers, as they say. Eat your heart out Bernard Salt.

We currently have a financial membership of 278 and they're spread far and wide. There are 70 in Mittagong, 68 in Bowral, 31 in Moss Vale, 51 in Wingecarribee Shire Villages, 46 elsewhere in NSW, 6 in Queensland and 6 in the Australian Capital Territory.

During the month of January there was a total of \$383 in publication sales. The Society holds a large stock of publications for sale at both the Archives in Mittagong

and the Museum in Berrima. Most are publications have been researched and written by our members. A total of 60 publications are listed for purchase on our website with payment facilities offered via PayPal if required.

Recently the Society received a large number of photos kindly donated by the family of the late Don Moore.

Donald Edward Moore passed away on 6 November 2017 aged 85. He was a long standing member of our Society who had a great passion for Berrima Village, his childhood home. He worked at Blue Circle Southern Cement (now Boral) for 42 years. During his lifetime Don collected a large number of photographs of Berrima and the cement works. The donated photos will be accessioned, sorted, scanned and added to our Digital Library which currently holds a catalogue of 8000 photos accessible from our website.

DID YOU KNOW! A thief who stole a calendar got twelve months.

Ian Mackey

### GENERAL MONTHLY MEETINGS

**MARCH 2018:**

**Thursday 22 March at 2:00pm**

**SPEAKER:**

Tony Sheffield, Professional photographer and artist

**APRIL 2018:**

**Thursday 26 April at 2:00pm**

**SPEAKER:**

To be announced

**AFTERNOON TEA** is served following each month's speaker.  
Members please bring a plate or a donation.

**The Family History Interest Group** meets each month at the Mittagong Archives on the first Wednesday, at 1pm

THE  
Story  
Centre

**BERRIMA  
DISTRICT  
MUSEUM**

STORIES OF PEOPLE, PLACES  
AND OBJECTS FROM  
THE SOUTHERN HIGHLANDS

## Senior Vice-President's Column

### Bruce Moore

#### "PC" Gone Mad

I'm told that an 88-page handbook of protocol and politeness has been handed out to the intended Commonwealth Games army of Queensland volunteers. At the same time midwives are suggesting instead of "good girl" and "painful contractions" these words to be replaced by "well done" and "strong contractions".

After hearing about this Political Correctness, I've decided that by implementing more docility we could change the rules in certain events to make them risk-free.

For example for the next Games:

- Ramps will be attached to all hurdles, front and back, avoiding groin injuries.
- A childproof fence to be built around all swimming pools and water wings provided to all swimmers to prevent drowning.
- A merry-go-round erected for equestrian events, complete with organ music. Helmets are compulsory.
- Cork tips covering javelin ends to prevent impaling officials.
- Trampolines used to help high jumpers.
- Pole dancing to replace pole vaulting.
- Gumboots to be substituted in hammer throwing events.
- Shot put events will now be called thong throwing.
- Rugby substituted with touch footy.
- Cyclists will now be issued with 3 wheeler bikes to be ridden on a level path.
- Boxers will use compulsory cricket helmets and inflatable body suits.
- New events will include the sack, egg & spoon and 3-legged races.
- Every participant will be issued with a medal, only to be fair.

Well, I must be off now in my air-conditioned, air-cushioned, seat-belted, GPS-guided, computer-driven vehicle . . . stop it!



## Berrima District Museum

### THE STORY CENTRE

Please note that the museum is now open at least 5 days a week

MUSEUM OPEN: 10am to 4pm

WEDNESDAY TO SUNDAY

and every day during NSW school holidays and on public holidays. Groups welcome at other times by arrangement. Ph John 4872 1660.

### Archives opening hours

Monday 10:00 am – 4:00 pm

Tuesday 10:00 am – 4:00 pm

Saturday 10:00 am – 1:00 pm

### Research Fees

Research fees for non-members:

\$25.00 per hour or part thereof for telephone and postal enquiries.

\$5.00 per hour or part thereof for enquirers who attend the archives and carry out their own research.

### Membership Details

Please note that all membership enquiries and changes of address details should be addressed to:

The Membership Secretary  
c/- the Society's postal address  
or email: [bdhsarchives@gmail.com](mailto:bdhsarchives@gmail.com)

### Place Names Interest Group

At the September meeting last year, David Blair gave a very interesting talk about the Australian National Place Names Survey project. It was decided we should establish a Special Interest Group to research the meanings and origins of place names in the Southern Highlands.

This group has now met several times and is in the process of deciding upon an action plan. Anyone interested in joining this exciting project should contact Narelle Bown on Tel: 4868 3972 or email [nbown@gmail.com](mailto:nbown@gmail.com)

On page 6 is an extract from the Royal Australian Historical Society's current eNewsletter about a Place Naming Policy recently issued by the Geographical Names Board.

## Bowral trachyte at Canberra

Member Jane Lemann advises that the Mount Gibraltar Trachyte Boulder recently transported to the National Rock Garden in Canberra is to be unveiled on Sunday 25 March at 2pm, by the Wingecarribee Shire Mayor.

Any members interested in attending the occasion should contact Jane directly. It is hoped to arrange a bus if numbers so warrant.

The event marks the culmination of efforts by the Mt Gibraltar Landcare & Bushcare Group and Wingecarribee Shire Council and who collaborated to organise the donation.

After being extracted on 1 November 2017, the stone was transported to the National Rock Garden where, after being positioned and polished, an inscribed plaque was attached.



As reported in the *Southern Highland News* on 3 November, the National Rock Garden Director, Mike Smith, said the site was thrilled to acquire a stone. "We try to put rocks in the garden that tell a story. The Bowral Trachyte has contributed significantly to local industry and influenced the lives of lots of Australians for a long period, and continues to do so."

Bushcare group convenor, Jane Lemann, said Bowral trachyte was an underrated natural resource unique to the Highlands. "Mount Gibraltar is the only place in the world where this stone is found."

Geologically known as 'microsyenite', it was commercially marketed as Bowral trachyte in the later 19th and early 20th centuries. The stone's unique properties, durability, strength and aesthetics made it highly sought after, and a convenient replacement for Sydney's original crumbling sandstone kerbs and gutters.

## Our March Meeting Guest Speaker

Tony Sheffield will be guest speaker at this month's general meeting on Thursday 22 March.

Tony, a professional photographer, will speak about his house, Cherry Lea, in Moss Vale.

Tony was born at Windsor, in the United Kingdom.

He is the son of a British Army Officer serving with the Household Cavalry.

With his family he travelled with the army regiment to live in Germany, Malaysia and Singapore as well as various places within the UK.

This travel and both his parents' keen interest in photography inspired him to take photographs at a very early age and this year is his 40<sup>th</sup> year as a qualified professional photographer.

Tony emigrated to Sydney in 1998 and settled in the Southern Highlands in 2000, then joined *Highlife* Magazine as a full time photographer in 2001.

Following a couple of exhibitions locally he now has a strong following by fans of the photographic print and has a permanent gallery within the Brown Bookshop in Bowral for his fine art canvases and restored vintage maps.

Quote from a *Highlife* editorial:

"Internationally recognised, Sheffield's assignments have taken him far and wide within the Asia Pacific region for clients in Los Angeles and London as well as work within Australia for Christie's Great Estates and Architectural Digest magazines.

With forty years in the photographic industry starting out as a dark room technician in England before studying photography in Scotland, his exhilarating and occasional improbable photographic journey has taken him from automotive, architecture, interiors, Royal horses and carriages through to shipbuilding for the Royal Navy".



## Reminder of 200<sup>th</sup> Anniversary events

### TALLONG: History Evening (Saturday) and Bus History Trail and Walk Trail (Sunday), 24/25 March

The Tallong community will be celebrating the 200<sup>th</sup> anniversary of the first known party of European explorers to pass through their area in 1818.

On the 24<sup>th</sup>, the Marulan & District Historical Society is hosting a History Evening in Tallong Memorial Hall, from 7pm. You will be taken back through the history of Tallong and the James Meehan expedition of 1818, followed by a delicious supper and complementary wine. To cover costs, a donation of \$5 is asked for.

On the 25<sup>th</sup> there will be a morning and afternoon Bus History Trail (a few seats are still available). Visitors to Tallong can also enjoy a walking trail around the village with lunch provided. Please RSVP asap to [secretary@tallong.com.au](mailto:secretary@tallong.com.au).

**WINDELLAMA:** On the Sunday before, to coincide with its Market Day on 18 March 2018, Windellama will celebrate the 200th anniversary of its discovery by explorers James Meehan and others. The day will commence at the museum in the grounds of the Windellama Hall at 10.00am with the unveiling of a map showing the explorers' route and the launch of the 'Some Windellama History' book. A 200<sup>th</sup> cake will be served along with morning tea.

## Family History Interest Group

From Maxine Gray: A very keen group of family history members is now meeting in the Archives on the first Wednesday of each month from 1pm- 3pm.

At the February meeting we had a wonderful presentation of Family Tree Maker program complete with projector and screen, so attendees were able to view all the aspects of this family history program so well presented by Rob and Gwen Herbert, with many questions being asked.

In March we will review Legacy, another of the family history programs, which is free to download. We will do a comparison and, if time allows, hold a further session on Trove.

Having the availability of screen and projector downstairs is a bonus and I thank those who assisted with making this possible.

New members are most welcome to the group, please give Maxine Gray (*convener*) a ring on 4869 4958 for further information and suggestions.

## Society's exhibition of its artwork

### "OUR CREATIVE PAST"

An exhibition of artwork selected from our Archives and Museum is now on show at the Foyer Gallery, Wingecarribee Shire Council Chambers, Moss Vale.

The exhibition will run until 28 March and admission is free. On display are embroideries, drawings, water colour and oil paintings, photographs, hand written illuminated addresses and certificates. Some of the art pieces date from the early 1800s.

Whatever form they take all the creative works have a tale to tell. Some have travelled vast distances, visited many places or survived for many generations. The exhibits are donations given over many years by individuals and families to the Society for safe keeping and preservation.

We encourage members to visit this fascinating selection of unique pieces. There is the story of a past era embedded in the embroidery *The Mother's Grave* – a *Child's Lamentation*, in the painting of Alfred Green, in the photograph of *The Marshall Family*, in the memorial certificate for Joseph Eaves, in the illuminated address given to Matron Thompson and in the passport of John Gill.

Some of the more recent pieces, such as images of Throsby House, All Saints Church, SCEGGS and the portraits from the Alf Stephens Collection, capture stories and freeze in place images of past eras.

For those who cannot make it to the WSC Gallery, we feature here a selection of the exhibition pieces.



**ALL SAINTS CHURCH – SUTTON FOREST**

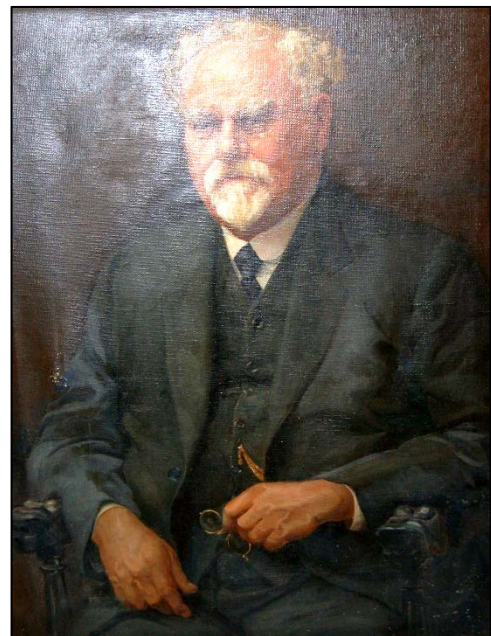
Watercolour of All Saints Church of England at Sutton Forest painted by Daphne Bunter circa 1990. Daphne with husband Eric at one time owned and operated Bunters Men's Clothing Store in Bowral. The church was designed by prolific ecclesiastical architect Edmund Blacket). It was completed in 1861.



**SYDNEY CHURCH OF ENGLAND GIRLS GRAMMAR SCHOOL (SCEGGS) MOSS VALE – 1936**

Located between Suttor, Vale and McCourt Roads, Moss Vale, the property was originally established as a preparatory school for boys by Charles Kolling (d1926). He gifted the school to the Masonic Lodge which sold the 380 acre property to SCEGGS in 1929.

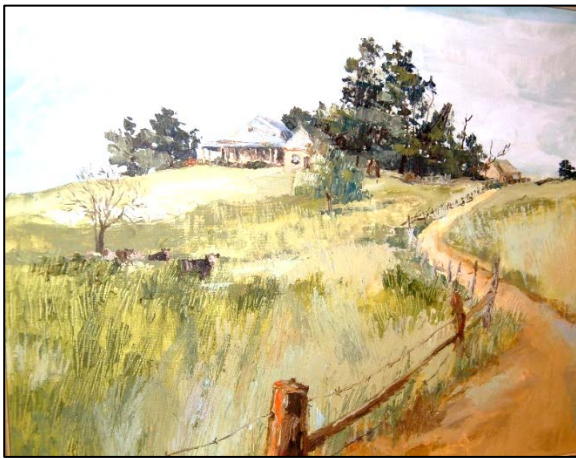
Sydney Church of England Girls Grammar School was first established in the Southern Highlands in 1905 at Bowral. The school moved to Moss Vale in 1930 after extensive renovations to the original buildings.



**ALFRED WILLIAM GREEN (1858-1935)**

Alfred Green was a career public servant for 50 years from 1872 to 1922. His association with the State Children's Relief Board began in 1884, beginning his lifelong advocacy on behalf of the well-being of the children of NSW. He took a particular interest in the Mittagong Farm Home for Boys. He served on numerous boards and committees related to hospitals, health and welfare, as well as being involved with the administration of cricket and rugby for more than 50 years.

This portrait of was donated to the Society by Miss Judith Green, who has inherited her grandfather's commitment to community service. She is well known for her work at Bowral District Hospital and the Moss Vale Show Society.



**THROSBY PARK - 1973**

**Oil painting by Mittagong artist Chris Moore**

Granted to Dr Charles Throsby in 1819, Throsby Park has been home to six generations of the Throsby family. After inheriting the property from his uncle, Charles Throsby Jnr with his wife Elizabeth commenced building the Georgian colonial-style house in 1834 eventually extending it to 27 rooms.

Throsby Park was in the care of the National Parks and Wildlife Service from 1975 to 2010 when it was transferred to the Historic Houses Trust. In 2014 the house was leased to a member of the Throsby family in a public/private partnership that will ensure its long term future and conservation.



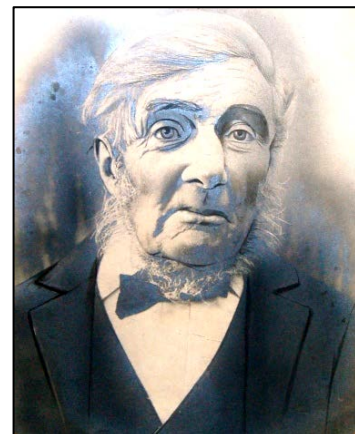
**JAMES MURRAY CHRISTIE – ILLUMINATED ADDRESS**

This hand written and coloured illuminated address was presented on 27 May 1903 by prominent gentlemen of Bowral to James Murray Christie upon his departure from the town. He had enthusiastically served the community as an alderman and mayor for eight and a half years. Some of the notable gentlemen representing the townspeople included Joshua Stokes (alderman, mayor and Gib Reserve advocate), Ebenezer Davis (storekeeper), Alf Stephens JP (builder), William Beer (newspaper proprietor) and Francis Broughton Kyngdon JP (alderman, Berrima District Hospital supporter).



**ALF STEPHENS AND SONS SHOP-FRONT**

Alfred Stephens took over his father's building business (established in 1885) in 1917 when Alfred senior retired. Local area buildings constructed by Alf Stephens & Sons include Bowral District Hospital, Dormie House, Hotel Ranelagh, additions to Frensham and Annesley Schools and his own house, Grantham, named for his wife's place of birth in England. The Alf Stephens & Sons business premises were in Boolwey Street, Bowral. The building was finally sold in the 1970s and is now the Target store.



**DANIEL MUMBERSON (1825 – 1916)**

Photo taken in 1915 at the age of 90.

Daniel Mumberson and his family were among the pioneer settlers of the Burrawang area arriving there in the 1860s. Daniel, his wife Barbara and three sons, John, Joseph and William, came to Australia from Keswick, England in 1853. They lived in Kiama where they had another son, Mathias and two daughters, Sarah and Mary Ann, before Daniel and two of his sons, Joseph and William moved up the escarpment to Burrawang.

Whilst building their home they earned their living by shingle cutting and pit-sawing timber. When the house was completed they were joined by Barbara Mumberson and the younger members of the family. Barbara died in 1898 aged 75 and Daniel in 1916 aged 91. Both are buried in Burrawang General Cemetery.

## ANZAC Rail Installation at Moss Vale

As mentioned in last month's newsletter, a series of large commemorative artworks created by local visual artist Tracy Luff are being progressively installed at Moss Vale, Goulburn and Picton stations.

On 23 February 2018 the Moss Vale installation was unveiled by Howard Collins OBE, Acting Chief Executive of NSW Trainlink, with Hume MP Angus Taylor and Goulburn MP Pru Goward in attendance, and witnessed by a gathering of interested people including several members of our Society.



**The new artwork installation at Moss Vale Station**

The Great Southern Line Anzac Story project was developed by Southern Tablelands Arts. Research was undertaken into the lives of Southern Highlands/ Tablelands returned railway servicemen and how the experiences of war and their employment in the NSW Railways influenced and shaped their lives. The works have drawn on the research of Dr Mary Hutchinson.

The project has been supported by Transport NSW and Transport Heritage NSW, with Goulburn Mulwaree Council, Wingecarribee Shire Council, Wollondilly Shire Council and the Goulburn Services Club providing financial assistance.

## Valuing Historic Place Names

Extract from RAHS eNewsletter of February 2018:

The Geographical Names Board has recently issued a Place Naming Policy that will be of interest to and of use to many Societies. Among other things, the new policy takes into account both history and Aboriginal languages, and includes an extensive glossary that will assist in determining new place names and understanding many existing names.

The City of Sydney has also developed a new draft policy for place naming. Developed by the City Historian, Dr Lisa Murray, the content will be of great

interest to historians and societies beyond the City of Sydney, and a model for other local councils. Read more in History News on the RAHS website.

The Heritage Council has a long-standing policy on place names of heritage value that emphasises the importance of understanding the history of a place name before seeking to change it, and reading place names as historical records in their own right. It is a very useful document, and can also be viewed online.

- provided by Dr Bruce Baskerville, RAHS Councillor

## The Max Rogers Research Library

*Carolyn Dougherty*

One year on from the passing of our colleague and friend, Max Rogers, the reorganisation of the library collection has now been completed. We hope this will not only provide more space but make the library more worthy of the name it now bears.



Changes include the reconfiguration of the Reference Section, which is now housed entirely on the shelves in the middle section of the library, with the General Collection now placed along the two outer walls. Some sections within the collection have been rearranged in order to make them more user friendly. Signs at the end of each bay of shelves indicate sections held within.

The library catalogue too has undergone an update and is now available in Filemaker Pro format. Please don't hesitate to ask our volunteers for assistance if encountering difficulty in locating material on the shelves. Rules as to borrowing remain unchanged with reference material available for use within the Archives only, while all items housed in the general collection are available for loan.

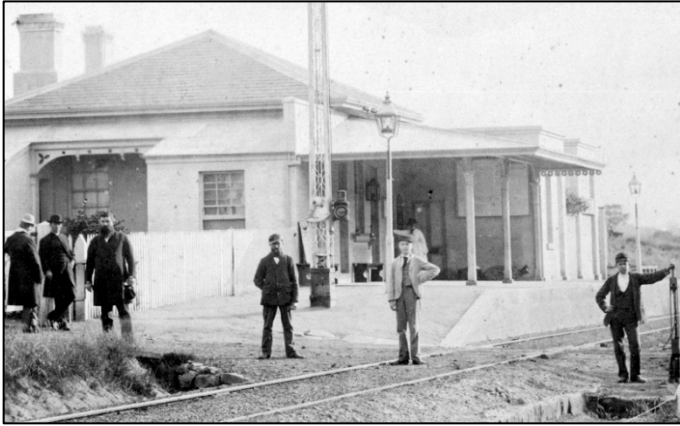
When borrowing books, you are asked to fill in your details as well as details of the item you are borrowing in the 'Loan Book' kept on the shelf beneath the library windows. We request that new members become familiar with this and with the rules, to which we request all members to adhere.

We hope many of you will make use of this great resource – the Max Rogers Research Library.

## Railway collision at Bowral in 1886

### Part 1 of 2: A narrow escape from disaster

Celebrations were held at Bowral Station recently to mark its 150 years. Between 1863 and 1869 contractors built the Great Southern Railway in sections from Picton to Goulburn. The Mittagong to Sutton Forest (Moss Vale) section was completed in December 1867 and, where the line traversed the Wingecarribee Flats, Bowral Station was built.



Bowral Station originally consisted of a small platform with a modest booking office, waiting room and residence, located slightly north of the present main building. Nearby was a goods shed and level crossing. The line arrangement consisted of one track (now the Down track) and a refuge loop.

Once the railway opened, the Southern Highlands attracted many new residents and became a popular holiday destination. Bowral grew and prospered with hotels and boarding houses catering for visitors. In 1892 Bowral Station was provided with a larger platform and an elegant, Victorian building, still in use, housing the booking office and waiting room.

In 1886 a major railway catastrophe occurred just north of the station. Had it resulted in fatalities, it would be well-remembered today. Fortunately, however, no one was killed, although 16 people were injured. Shortly after noon on Saturday 8 May 1886, a tourist train from Sydney collided with the engine of a goods train which was still on the main line. The *Bowral Free Press* and *Sydney Morning Herald* covered the story in their Monday editions. Edited extracts follow here.

The *Herald* reported that a serious railway collision had occurred on the Southern line. The No 7 down tourist train from Sydney, and an up goods train, drawn by No 44 engine, ran into each other at a spot 300 yards north of Bowral Station, where the goods train was shunting. "The semaphore, it appears,

showed the danger signal at the time. The engine-driver of the goods train saw the tourist train approaching, and he tried to get his train off the main line, but the load was too heavy to be shunted back on to the loop line in time, and the engine of the tourist train came into collision with the engine of the goods train."

"The locomotive of the tourist train lifted the engine of the latter, and threw the tender off the line. One of the goods trucks was capsized, and this threw several other trucks off the rails. Two carriages of the passenger train telescoped. Several passengers were injured, some being seriously hurt. The engines of the tourist and goods train, together with the two telescoped carriages, were smashed up. It was exceedingly fortunate that the train did not go over the bridge, or the loss of life would have been terrible."

The local paper provided a similar description with some additional colourful details. "The tourist train came flying along and dashed into the engine of the goods train with terrific force. The driver and fireman of the goods train jumped from their engine just before the trains struck, and they probably saved their lives by so doing. The concussion was painfully severe; and the passengers in the train, many of whom were collecting their bags and cloaks, preparatory to alighting at Bowral station, were thrown down in all directions."

The tourist train consisted of four saloon carriages, a second-class carriage and a brake van. The second-class carriage was smashed in at one end. The *Bowral Free Press* declared it was almost miraculous that the carriages, which came to a dead-lock right on the bridge, were not thrown headlong to the ground 25 feet below. "Had this happened, nothing could have prevented the occupants from being crushed. Never before in the history of railway travelling in the colony has there been so narrow an escape from a fearful railway disaster."

"There was utmost consternation among the passengers. Looking out of the windows there was the great gap between them and the road below, and in the fright it was naturally thought the whole train would go over the precipice."

Crowds gathered at the scene, and the work of assisting passengers from the carriages on the bridge was commenced. This required great care, the bridge being no wider than the rails. While most had received just a fright and a shaking, there were sixteen people with injuries, some serious.

*To be continued; compiled by P Morton*

## Berrima District Historical & Family History Society Inc

PO Box 131 Mittagong NSW 2575 ☎ Telephone (02) 4872 2169

email: bdhsarchives@gmail.com ☎ web: [www.berrimadistricthistoricalsociety.org.au](http://www.berrimadistricthistoricalsociety.org.au)

- ARCHIVES:** Cnr Old Hume Highway and Bowral Road, MITTAGONG.  
OPEN: Mondays, Tuesdays 10am-4pm and Saturdays 10am-1pm. Closed Public Holidays.  
Library collection contains reference books, journals and newsletters of other societies.
- MUSEUM:** Market Place, Berrima. Tel: 02 4877 1130. Email: [bdmuseum@bigpond.com](mailto:bdmuseum@bigpond.com)  
OPEN: 10.00am to 4.00pm, Wednesdays to Sundays, and during school and public holidays.  
**Museum Committee:** John Schweers (Manager), Harlan Hall (Project Manager), Lyn Hall (Graphics, Exhibitions), Sylvia Carless (Roster), Alan Hornsby, Harold Wall (Human Resources).
- MEMBERSHIP:** Any person wanting to join the Society may do so at any stage during the year by completing a form and paying the appropriate fee. Joining Fee \$10.00 – Single \$25.00 – Family \$35.00.
- AFFILIATIONS:** Royal Australian Historical Society, NSW Association of Family History Societies, Museums Australia Inc & Regional Chapter.

If undelivered return to:  
Berrima District Historical & Family History Society Inc  
PO Box 131  
MITTAGONG NSW 2575  
Berrima District Historical & Family History Society Inc  
Newsletter  
Print Post Approved  
PP100001055

PRINT POST  
100001055

POSTAGE  
PAID  
AUSTRALIA

**BDH&FHS PATRON:** Mayor of Wingecarribee Shire, Councillor Ken Halstead

<b>President</b>	Ian MACKEY
<b>Snr Vice President</b>	Bruce MOORE
<b>Jnr Vice President</b>	Linda EMERY
<b>Hon Treasurer</b>	Patricia Doris
<b>Hon Secretary</b>	Peg HARVEY
<b>Archivist</b>	Linda EMERY
<b>Museum Manager</b>	John SCHWEERS
<b>Membership</b>	Peg HARVEY
<b>Newsletter Co-ordinator</b>	Philip MORTON
<b>Research Team</b>	Carolyn DOUGHERTY, Janet BLACK and Frank MITCHELL
<b>Conservation Team</b>	Denise MACKEY, Roberta STOVE

**Management Committee:** President, Vice Presidents, Secretary, Treasurer and members Leonie Knapman, Denyse Barker, Philip Morton, Carolyn Dougherty, Denise Mackey, Jenny Frost, Ros Dale.