



Bowral



Mittagong



Berrima



Moss Vale

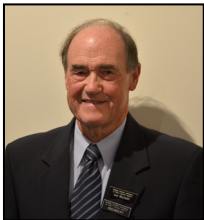
# BERRIMA DISTRICT HISTORICAL & FAMILY HISTORY SOCIETY Inc.

Founded 1960

Located in the Wingecarribee Shire,  
Southern Highlands of NSW

## NEWSLETTER

No 502 February 2018



### From the President's Desk

A Happy New Year to all members and welcome to our first newsletter for 2018.

The Christmas break has evaporated very quickly, however Denise and I were able to squeeze in a short adventure cruise, on a small ship, around Tasmania. We explored Freycinet National Park, Maria Island, Port Arthur, Bruny Island, Recherche Bay and Port Davey. Port Davey is only accessible by sea, aeroplane or by hiking for six days. We explored the history, flora and fauna of this beautiful Island.

What is happening at the Archives? One of our first projects is to replace the old "dust catcher" curtains with block-out roller blinds which are more suitable for an Archive containing valuable historical documents. Our volunteers have removed the existing curtains and cleaned the windows and sills. See, we can multi-task. Some might say it's the blind leading the blind.

Ensure you make a diary note for the month of March when the Society will be hosting an exhibition of artworks from both the Archives and the Museum.

This exhibition is being held in the Foyer Gallery at the Wingecarribee Shire Council building in Moss Vale. This is a unique chance for all our members and friends to see some of the historic artworks that are hidden away in storage most of the time.

Our research and newsletter teams will be hard at work to produce this newsletter and carry out any research requests received during the recess.

An ongoing project is the digitisation of our documents and photographic records. This is a long term project and we are fortunate to have willing volunteers to carry out this valuable work. The ultimate objective is to access this information on the Society's website.

A successful Australia Day parade was held in Berrima where the Society members dressed up in period costume and marched through the street behind the Society banner. I did spy a maid-in-waiting, a babe-in-arms, some lovely period frocks and a couple of "dodgy" looking men.

Stay tuned for next month's newsletter where I will talk about some of the exciting things planned for the Museum in 2018 and beyond.

Ian Mackey

### GENERAL MONTHLY MEETINGS

**FEBRUARY 2018:** Thursday 22 February at 2:00pm  
**SPEAKER:** Linda Emery: 'Captured in the Light No 11'  
**AFTERNOON TEA:** To be served following the speaker. Members please bring a plate or a donation.

**MARCH 2018:** Thursday 22 March at 2:00pm  
**SPEAKER:** To be announced  
**AFTERNOON TEA:** To be served following the speaker. Members please bring a plate or a donation.



## Senior Vice-President's Column



**Bruce Moore**

### Cherishing Christmas Cheer

I love receiving Xmas cards!

For some obscure reason, I think the simple act of walking to the letterbox after hearing the postman's bike (sadly not his whistle anymore) and removing a hand-written postage item from it gives me the greatest thrill these days. Simple stuff eh?

Here's a card from Canada! Let's see what Nancy says: "To the Moore's from Nancy". Is that all? How disappointing!

After travelling 11,000kms, costing over \$3 postage and handled by several sorters, Nancy could only manage to write "To the Moore's!"

You don't have to be a Bryce Courtney to pop in a few extra words, surely. Like "we're not dead yet", "Bob left me in August" or even "my hemorrhoid operation was successful."

Another card arrived and on opening the heavy envelope on which 'Card Only' was stuck, I finally extracted a card surrounded by about 40 foolscap pages of tiny writing, on both sides, describing the year's most boring events in minute detail:

"On Jan 1<sup>st</sup> we began the year by inviting 26 people over to enjoy Geoff's new barbeque . . . There was Marion from across the road, her husband Eric couldn't make it because of his recent complicated hernia episode . . ."

And on it went, ad nauseam. I said to the bride, 'you start on page 1 and I'll meet you around page 10 to try to get the gist.'

Don't get me wrong, I love Christmas!

I received a lot of wonderful presents that I can't wait to exchange.

Cheers, Bruce

## Upcoming Events information

### 23 February 2018: Commemorative artwork to be unveiled at Moss Vale Railway Station, starting at 10:00am.

After two years of research and development, the Great Southern Line Anzac Story project is nearing completion. The project was developed by Southern Tablelands Arts with the majority of funding by the ANZAC Centenary Fund in 2016. It encompassed research into the lives of Southern Highlands/Tablelands returned railway servicemen.

A series of large commemorative artworks are being created by acclaimed visual artist Tracy Luff to be housed at Moss Vale, Goulburn and Picton railway stations. The first installation will be unveiled at Moss Vale on 23 February 2018.

Local artist Tracy Luff has drawn on family stories and histories to create this meaningful and beautiful public art work series. As timeless as railway tracks, as graceful as a new dawn, the three sculptures will remember World War One veterans. They will stand at the three railway stations along what was known during the war years as the Great Southern Line. Creating the sculptures began in 2015, the 100th anniversary of the Anzac landing, when Southern Tablelands Arts conceived the idea.

Ms Luff collaborated with researcher Dr Mary Hutchison of the Australian National University, and has drawn on stories of struggle in the aftermath of the Great War.

Giselle Newbury, Projects Officer for Southern Tablelands Arts, invites our members to attend the launch and support the project in our local area.

### Archives opening hours

Monday 10:00 am – 4:00 pm  
Tuesday 10:00 am – 4:00 pm  
Saturday 10:00 am – 1:00 pm

### Membership Details

Please note that all membership enquiries and changes of address details should be addressed to:

The Membership Secretary  
c/- the Society's postal address  
or email: [bdhsarchives@gmail.com](mailto:bdhsarchives@gmail.com)

## 'Whole Histories: Keeping the Stories Alive' Conference, Galong in March

Yass & District Historical Society is again holding their 2018 Conference at St Clement's Retreat & Conference Centre, Galong from 2 to 4 March.

It will continue the theme of the 2017 Conference, specifically examining Australian history in all its facets and its presentation to modern audiences through museums, technology, publications and interaction between historians and family historians.

Three keynote speakers will be featured: Dr Ann Herraman from the Mt Lofty Districts who will present innovative ideas to invigorate historical groups and communities; Professor Mark McKenna from the University of Sydney who will speak about his award winning publication, *Looking for Blackfellas' Point: An Australian History of Place*; and Dr Matthew Trinca, Director of the National Museum of Australia who will present 'Object, Places, People: Reconnecting History and Heritage in Communities'.

It is a value-packed weekend with all talks, accommodation, meals and entertainment modestly priced. Good food, good wine and good company.

Further details and booking form are available on Yass & District Historical Society website.

## Berrima District Museum

### THE STORY CENTRE

Please note that the museum is now open at least 5 days a week

MUSEUM OPEN: 10am to 4pm

WEDNESDAY TO SUNDAY

and every day during NSW school holidays and on public holidays. Groups welcome at other times by arrangement. Ph John 4872 1660.

### Research Fees

Research fees for non-members:

\$25.00 per hour or part thereof for telephone and postal enquiries.

\$5.00 per hour or part thereof for enquirers who attend the archives and carry out their own research.

## February Guest Speaker: Linda Emery

### Captured in the Light series, No 11

Be informed and entertained by another in this very popular series on Thursday 22 February. Linda will show images from the BDHS collection and provide some stories from the history they reveal.

Linda will feature two selections to be included in our artwork exhibition at the WSC Gallery in March.

One is the 1814/15 passport belonging to John Gill, the great, great uncle of Bowral man Norman Cook, who donated it to the Society. Linda tracked Gill's journeys, including to Elba in Italy at the time of the Battle of Waterloo. Was he a spy or diplomat?

The other is an embroidery of 1855 donated to our Museum in Berrima, where it has been on display for some time. Linda will recount the poignant story of this historic item, which is titled 'The Mother's Grave: a child's lamentation'.

All are welcome to come along and hear these and other fascinating stories.

## Local historic house and church tour

### MITTAGONG AND BOWRAL

Our 'Tag along Tour' is on Sunday 11 February and a good number of members have already booked in and paid. Here is an update on the itinerary.

Our first stop will be at Wandevan in Southey Street, Mittagong. Completed in 1886, the house was built as a residence by Henry Southey founder of Oaklands Boarding School (now the Fitzroy Inn).

Owners Peter and Trish Law have invited us to view this interesting house of pise construction which they have restored. We will have morning tea there before driving to Bowral for another visit.

At Bowral we will visit Sts Simon & Jude's Church of England followed by a walk around the small churchyard cemetery to discover some of the stories of the interesting people buried there.

The tour will start from the archives car park at 10am and return 2.30 to 3.00pm. We will be travelling by car, so where possible we will car-pool.

There's still room for a few more, but please book immediately.

**COST: \$10 per person (includes a delicious morning tea) BRING YOUR OWN LUNCH**

## Society's artwork exhibition on soon

### "OUR CREATIVE PAST"

An exhibition of artwork selected from our Archives and Museum will be presented during March in the Foyer Gallery at the Wingecarribee Shire Council Chambers, Moss Vale.

On display will be embroideries, drawings, water colour and oil paintings, photographs, hand written illuminated addresses and certificates. Some of the art pieces date from the early 1800s.

You are all invited to come along, browse and appreciate a selection of the unique and fascinating pieces we have in our collections. Admission is free.

The exhibition has been curated by our Conservation Officer, Denise Mackey, with the guidance of Linda Emery and assistance from Lyn Hall.

We are grateful to Jenny Kena, the WSC's Cultural Development Officer, for the opportunity to mount this display. It allows us to showcase some of our collection to the general public and to highlight the role our Society plays in the local community.

The Foyer Gallery is a community exhibition space run by Wingecarribee Shire Council, showcasing principally the work of local artists and cultural groups. The Foyer Gallery is committed to the fostering of cross-disciplinary and cross-cultural practices that reflect the dynamism and diversity of culture in the Southern Highlands.



**Denise Mackey, Linda Emery and Roberta Stove with framed items being prepared for the exhibition. Donated by Tony Springett, the photographs are of his grandparents, Agnes and Alf Stephens.**

You are always welcome of course to view artworks from our collection which are on permanent display at our Berrima Museum and Mittagong Archives. For more information about the Foyer Exhibition contact the Archives or Museum.

## A significant birthday celebrated

At our Berrima museum recently a surprise morning tea was held for museum manager John Schweers, to celebrate his 80<sup>th</sup> birthday.



In attendance were many museum volunteers and Management Committee members, along with John's wife Bev and a daughter and grandson. A cake was shared and all enjoyed a great occasion.

## On parade at Australia Day, Berrima

This year's Grand Parade through Berrima included community, school and social groups, along with the usual array of classic automobiles and a showing of the more prosaic but essential services vehicles.



The Society's group of members in period costumes enlivened the event with a colourful display, keeping up our tradition of showcasing history in its many and varied aspects to the local community.

## Celebration at Tallong

*Janet Black*

On Saturday 24 and Sunday 25 March 2018, the Tallong community will be celebrating the 200<sup>th</sup> anniversary of the first known party of European explorers to pass through their area.

Deputy Surveyor of Lands James Meehan, Charles Throsby, Hamilton Hume and a party of 10 men including two Aboriginal guides, set out from Cowpastures Hut on the Nepean River on 3 March 1818, hoping to discover a possible route for wheeled vehicles between Sydney and Jervis Bay.

It rained and rained, they had trouble crossing creeks and the horses got bogged. It must be admitted that when they passed through the (now) Tallong area, Throsby was not impressed. He described them travelling 'through a very rotten stony poor country over a small stream of water [Barbers Creek] to a beautiful piece of fine forest called Mooraulin [Marulan], the country here changed in the most sudden manner from miserably barren to as picturesque and good forest as can be wished for'.

A History Evening is planned for Saturday 24 March, to be held in Tallong Memorial Hall beginning at 7pm. Supper will be provided by the Marulan and District Historical Society with a short talk on the Meehan expedition and a presentation on local historic sites.

On Sunday 25 March a History Trail is being organised with participants travelling by bus around the local area.

While details are yet to be confirmed, there will be at least one departure from Tallong Memorial Hall, in the morning, and possibly a second tour in the afternoon if demand requires it.

Participants will receive information sheets at each stop which can then be collated to form a 'mini' local history booklet. There will be a separate walking trail for the immediate village area.

Lunch will be provided by the Tallong Community Focus Group and the Tallong Rural Fire Brigade.

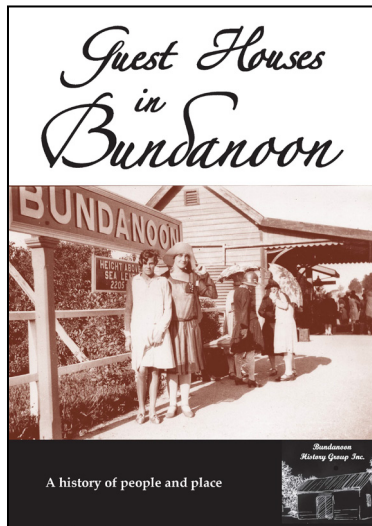
However, it is obvious that for catering and general logistics purposes, some idea of the numbers of people interested must be known as soon as possible. To reserve a seat on the bus, attend the Sunday lunch or to attend the Saturday evening event you MUST RSVP to [secretary@tallong.com.au](mailto:secretary@tallong.com.au) as soon as possible. Final details and costs will be available next month.

## Bundanoon Guest Houses updated

The Society has numerous books for sale featuring various aspects of the history of the Wingecarribee Shire, formerly known as the Berrima District. One of these is an updated version of a Bundanoon History Group publication about the town's guest houses.

**“Guest Houses in Bundanoon: a history of people and place” - 3<sup>rd</sup> edition revised and enlarged, 2017**

Bundanoon History Group first published a history of the town's guest houses in 1989, and a second edition in 1998 proved very popular, especially with people who could recall happy holidays spent at the guest houses, and with family historians researching the places their ancestors stayed or worked.



By 2012 new information and images had become available. In order to incorporate these, a dedicated group of BHG volunteers spent considerable time updating guest house information to produce a revised and enlarged third edition. This publication, called 'Guest Houses in Bundanoon – a history of people and place' was launched at the end of 2012.

It proved to be a very popular publication and by early 2017 almost the entire stock had sold out. As the History Group had continued to acquire more information and images of the guest houses, from former guests and from the families of guest house owners, last year it was agreed to produce a reprint, revised and enlarged, of the 3<sup>rd</sup> edition.

This version is now available for purchase. As far as possible, the format and layout of the 2012 version have been retained, although the book now has an expanded Index and a more professional binding with a glued spine rather than staples.

The updated edition is available for \$15 from the BHG History Shed, the Bundanoon Good Yarn shop, the Society's Archives in Mittagong and the museum in Berrima, or may be ordered through our website.

Readers familiar with the earlier editions will notice that some entries have been deleted and others expanded considerably.

Bundanoon was an easy steam-train ride from Sydney and became a favourite destination from the 1880s when the guest houses first opened.

The mountain air was cool, clear and stimulating and the views magnificent. Innumerable school holidays, honeymoons and relaxed weekends were spent at the guest houses, some of which could accommodate up to 130 guests.

Mittagong, Bowral and Moss Vale, also located on the southern railway, became holiday destinations as well, and offered a variety of attractions and outings. The spectacular natural scenery, however, readily accessible from the village of Bundanoon, was unique in the district and excited much interest in taking bush walks, horse-riding and going on picnics.

The period from the 1920s to the 1940s was the hey-day of the Bundanoon guest houses. Advertisements boasted spring water, fresh milk, cream and eggs and, in cold weather, roaring open log fires.

Here are some images from the book.



**Mountain Home guest house on Railway Avenue corner in late 1800s**



**Ida and Vera Gambell with their aunt Bertha at Springvale guest house**

Compiled by P Morton; photos courtesy Bundanoon HG.

## The Waite family and Browley

Moss Vale Railway Station recently celebrated its 150th anniversary, having opened in December 1867.

In an historical overview provided in this newsletter, it was noted that the station was built as a refuelling stop in a quiet farming locality. Near the station were three large rural estates, the owners of which had, in anticipation of the railway, put subdivisions up for sale in 1863. The owners were named as the Throsby, Hutchinson and Browley families. While the first two are correct, the third was actually the Waite family who had established a property named Browley in the 1820s. An apology for this mistake is offered to readers and to Waite family descendants.

The family of John Waite and his wife Mary (nee Robinson) were one of the earliest to settle in the Wingecarribee district. He received a land grant of 100 acres at Sutton Forest in 1819. Research on the Waite and Robinson families, prepared by a great, great grandson, was provided to our Society in 2011. Extracts follow here.

John Waite was born in England in 1781 and sentenced in 1803 for acting with another to steal two sheep in Kent. He was transported to NSW and, after arriving in Sydney in May 1804, was assigned as a Government Man to Dr Charles Throsby.



In August 1804 Throsby was appointed to the new settlement at Newcastle as assistant surgeon. He served there also as superintendent of labour for a short while and for three years was commandant of the northern settlement.

Throsby resigned this position in 1809 with an understanding that he would be given elsewhere an equal number of cattle and sheep as he had accumulated in the north.

He withdrew from public service and engaged in pastoral pursuits at Upper Minto, on Glenfield, a property granted to him. Governor Macquarie ratified the exchange of stock and extended the grant to 1500 acres.

John Waite was granted a conditional pardon in 1809 and a ticket of leave in 1810, and could reside in the Parramatta district, provided he stayed in Throsby's service.

In 1812 Waite married Mary Robinson (born 1797) and their first child, Elizabeth, was born that year at Glenfield. A second child, Mary (1814) died an infant, then were born Maria (1816) and John (1818).

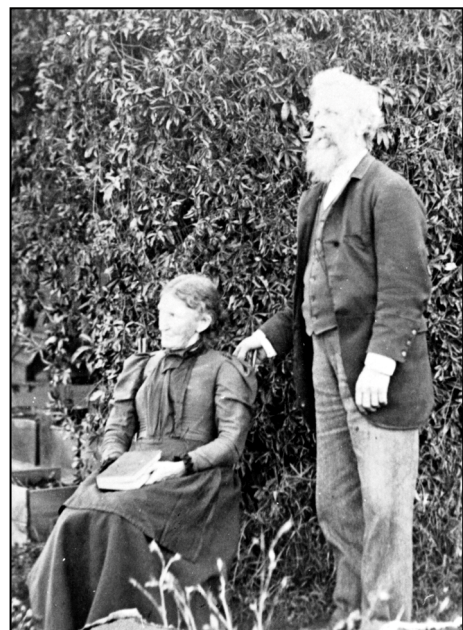
Waite most likely accompanied Throsby on all his explorations into country south and southwest of the Cowpastures during the seven years to 1821. Joseph Wild, who came into Throsby's employment in 1814, would have been with them.

After their exploration from Bong Bong to the Bathurst area, in 1819 Governor Macquarie made a substantial grant to Throsby of land at Bong Bong and provided both Waite and Wild with 100 acres of land a short way to the south.

Macquarie gave Throsby the job of superintending the construction of a road from the Cowpastures to the new south country and Throsby in turn made Wild the overseer. Throsby's explorations continued with his party going as far south as the Breadalbane Plains in March 1820.

Macquarie visited the roadworks late in 1820, named Throsby's 1000 acre land grant as Throsby Park, named the district south of Bong Bong as Sutton Forest, and a road traverse through the Cookbundoon Range as Wild's Pass.

John and Mary Waite settled on their 100 acre land grant at Sutton Forest. Their second son, Charles, born at Throsby Park in May 1821 was the family's first locally born child (pictured below with Maria Waite, either his wife or sister, c1900).



John Waite named his grant Browley and the next child Matilda was born there in 1822. Waite then sought additional land from the colonial government. He and Mary may have lacked book learning, but John used his connections, particularly with Throsby, to advantage.

In April 1823, Throsby put a memorial to the Colonial Secretary: "The Humble Memorial of John Wait, late Servant to Charles Throsby Esq and now a Settler in the County of Argyle."

Throsby declared that Waite had already fenced and cropped half of his 100 acres that season and also ran a herd of cattle. Having wife and five children to support, although uneducated himself he was desirous to place his children in the best schools in the Colony. Throsby endorsed Waite's request for permission to farm an unoccupied 500 acres adjacent to his property, until required by Government, the better to enable him to keep a dairy.

Throsby certified that Waite had served him "as a Government Servant and after he was emancipated faithfully, honestly and with perfect sobriety more than 18 years, and that his industrious habits as a settler entitles him to the best recommendation."

Waite's request was granted. The land is measured out as 699 acres on the Parish Map. Waite had already acquired Wild's 100-acre grant and, in 1825, again with Throsby's endorsement, purchased an adjoining 700 acres.

Waite would have grieved in April 1828 when Throsby committed suicide, aged only 51. Having no children of his own, Throsby had brought out a nephew (also Charles) to be his heir and it was Charles Jr's family that carried on at Throsby Park.

Waite's enterprise burgeoned, as by 1828 it appears he was working 1600-1700 acres. This land extended west of today's Illawarra Highway, between Berrima Rd and Oldbury Rd, to a line near the Cement Works. It now encompasses a major part of Moss Vale, there being a Waite St and Browley St.

On Browley, his original land grant, Waite built a brick house, workers' huts, coach house, meat works and other outhouses. At the census of 1828, of the 1000 acres Waite owned, 170 were cleared and 50 cultivated and his stock comprised 20 horses, 300 cattle and 650 sheep. Working for him were 13 men of various categories, free and assigned.

He and Mary had five daughters and three sons. Apart from the oldest, Elizabeth, all were under 12 years of age. Their mother employed a servant and her sister Maria also lived with them, as did Thomas

Saw, aged 55, free by servitude. In total there were 24 adults and children at Browley in 1828, with Elizabeth at school in Parramatta. By 1838 another daughter and three more sons would be born.

In the 1830s Waite had a barn/granary built on the property. It was large, being 60 x 40 feet in size, 30 feet high, with a 13 foot skillion at the back, used for shearing and grain storage. The barn had a timber frame, with 2-foot thick sandstock brick walls, and was provided with a cobblestoned floor. It had splayed vertical openings to provide ventilation for grain and large doors to allow easy access for wagons. It remains an impressive building today.

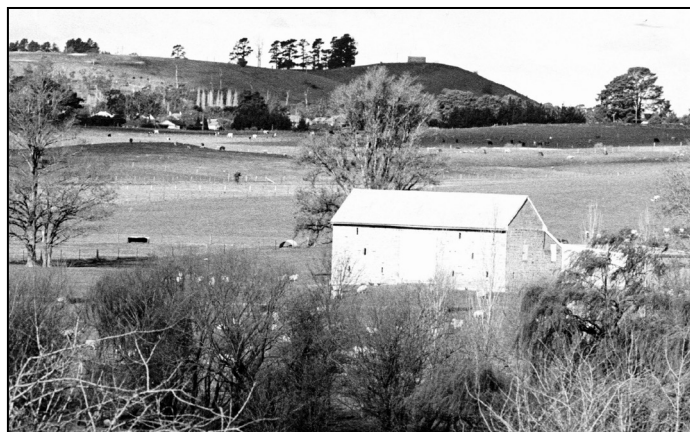
James Atkinson of Oldbury, who wrote a guide for prospective settlers in 1825, reckoned "a spacious barn floor is very useful, as threshing is sometimes the only work the men can be employed upon in wet weather, and is also particularly useful for the purpose of shearing sheep upon".

Wheat grown on Browley was milled at Oldbury with power from a waterwheel.

Waite also erected a schoolhouse, probably around 1826, to be as well "a place of worship and occupied as such until one has been built by the Government". It was considered a Church of England school and a forerunner of All Saints Church, Sutton Forest. The intention of using it for divine service was in keeping with the Waite's long-standing religious affiliations.

Mary Waite died in 1850 and John passed away in 1863. The property was then sold to the prominent Morrice family, who owned it for around 50 years. The land was sub-divided into rural and town allotments. In the 1920s the Cowley family purchased the homestead block and restored the old house, being owners until 1960.

Browley is still a working farm.



**FINE LEGACY: The Browley property in mid-20<sup>th</sup> century, with the barn an impressive feature.**

- compiled by Philip Morton.

## Berrima District Historical & Family History Society Inc

PO Box 131 Mittagong NSW 2575 ☎ Telephone / Fax (02) 4872 2169

email: bdhsarchives@gmail.com ☎ web: www.berrimadistricthistoricalsociety.org.au

- ARCHIVES:** Cnr Old Hume Highway and Bowral Road, MITTAGONG.  
OPEN: Mondays, Tuesdays 10am-4pm and Saturdays 10am-1pm. Closed Public Holidays.  
Library collection contains reference books, journals and newsletters of other societies.
- MUSEUM:** Market Place, Berrima. Tel: 02 4877 1130. Email: bdmuseum@bigpond.com  
OPEN: 10.00am to 4.00pm, Wednesdays to Sundays, and during school and public holidays.  
**Museum Committee:** John Schweers (Manager), Harlan Hall (Project Manager), Lyn Hall (Graphics, Exhibitions), Sylvia Carless (Roster), Alan Hornsby, Harold Wall (Human Resources).
- MEMBERSHIP:** Any person wanting to join the Society may do so at any stage during the year by completing a form and paying the appropriate fee. Joining Fee \$10.00 – Single \$25.00 – Family \$35.00.
- AFFILIATIONS:** Royal Australian Historical Society, NSW Association of Family History Societies, Museums Australia Inc & Regional Chapter.

If undelivered return to:  
Berrima District Historical & Family History Society Inc  
PO Box 131  
MITTAGONG NSW 2575  
Berrima District Historical & Family History Society Inc  
Newsletter  
Print Post Approved  
PP100001055

PRINT POST  
100001055

POSTAGE  
PAID  
AUSTRALIA

**BDH&FHS PATRON:** Mayor of Wingecarribee Shire, Councillor Ken Halstead

<b>President</b>	Ian MACKEY
<b>Snr Vice President</b>	Bruce MOORE
<b>Jnr Vice President</b>	Linda EMERY
<b>Hon Treasurer</b>	Patricia Doris
<b>Hon Secretary</b>	Peg HARVEY
<b>Archivist</b>	Linda EMERY
<b>Museum Manager</b>	John SCHWEERS
<b>Membership</b>	Peg HARVEY
<b>Newsletter Co-ordinator</b>	Philip MORTON
<b>Research Team</b>	Carolyn DOUGHERTY, Janet BLACK and Frank MITCHELL
<b>Conservation Team</b>	Denise MACKEY, Roberta STOVE

**Management Committee:** President, Vice Presidents, Secretary, Treasurer and members Leonie Knapman, Denyse Barker, Philip Morton, Carolyn Dougherty, Denise Mackey, Jenny Frost, Ros Dale.