



BERRIMA DISTRICT HISTORICAL & FAMILY HISTORY SOCIETY Inc.

Founded 1960

Located in the Wingecarribee Shire,
Southern Highlands of NSW

NEWSLETTER

No 493 April 2017

From the President's Desk

Chinese Whispers

Have you ever said something to a person that comes back to you entirely differently? Misheard information is very common and can lead to awful results. Here are some classics I thought you'd like to read.

A favourite example is the message a soldier gave in WW1, which began:
"Send reinforcements, we're going to advance". Along the trenches it finally became:
"Send 3/4d, we're going to a dance."

My grandchildren make me laugh when they rejoice and sing the National Anthem as:
'Australia's sons let us ring Joyce'
Somewhere over the rainbow, way up high' turns into 'somewhere over the railway,
weigh a pie.'

The world has seen plenty of miscommunications, mostly resulting with calamitous consequences eg;



Bruce Moore,
President

Continued on page 2

GENERAL MONTHLY MEETING

APRIL MEETING:	Thursday 27 April at 2:00pm
VENUE:	Society Research Centre, Old Council Chambers Building, Bowral Road, Mittagong
GUEST SPEAKERS:	Dr Peta Seaton Peta Dr Peta Seaton, on her long interest and participation in Near Eastern archaeology at the Pella dig in Jordan.
AFTERNOON TEA:	To be served following the speaker. Members please bring a plate or a donation.

MAY MEETING:	Thursday 25 May at 2:00pm
VENUE:	Society Research Centre, Old Council Chambers Building, Bowral Road, Mittagong
GUEST SPEAKER:	Eric Savage

THE
Story
Centre

**BERRIMA
DISTRICT
MUSEUM**

STORIES OF PEOPLE, PLACES
AND OBJECTS FROM
THE SOUTHERN HIGHLANDS

From the President

Continued from front page

The Salem Witch Trials in 1692 (false execution of innocent women in Massachusetts)

The Charge of the Light Brigade in 1854 (almost wiping out the British cavalry)

The Battle of Wounded Knee of 1890 (more a massacre of unarmed Indians)

The accidental shooting of Archduke Ferdinand in 1914 (resulting in WW1)

Japan's opportunity to surrender earlier with Europe in 1945 (world's first use of atomic weapons.)

Lost in Translation.

Advertisers have to be very aware of cultural and language differences when selling their products in another country.

The Queensland beer ad "I feel a 4X coming on...." was popular here, but in the US, 4X is a brand of condom! Whoops!

In Taiwan the English slogan "Come alive with Pepsi" was literally translated into: "Pepsi brings ancestors back from the dead." (If only.)

Japan was given the Colonel Sanders treatment of "finger-lickin' good" which was interpreted: "Good to eat your fingers with."

Schweppes launched their Tonic Water in Italy and was marketed as "Toilet Water".

My most memorable howlers were from the song: "I Only Have Eyes For You" turning it into a shower room hit "I only have ice for Hugh."

Also during my religious phase in Sunday school we learnt the words: "The Cross I'd Bear for Jesus."

I spent the rest of my days looking for a cross-eyed bear!

Berrima District Museum

THE STORY CENTRE

Please note that the museum is now open at least 5 days a week

MUSEUM OPEN: 10am to 4pm

WEDNESDAY TO SUNDAY

and every day during NSW school holidays and on public holidays.

Groups welcome at other times by arrangement. Phone John 4872 1660.

Archives opening hours

Monday 10:00 am - 4:00 pm

Tuesday 10:00 am - 4:00 pm

Saturday 10:00 am - 1:00 pm

Membership details

Please note that all membership enquiries and changes of address details should be addressed to:

The Membership Secretary

c/- the Society's postal address

or email: bdhsarchives@gmail.com

Talks & Events in local area

AT HISTORIC BUNGONIA

**Markets on Easter Saturday,
April 15, 9am-2pm**

Old wares, collectables, new items, tastings, plants and flowers, books, craft, characters with stories to tell, BBQ and afternoon teas at the beautiful rural village of Bungonia.

**Bungonia's Hidden History: Saturday
29 April, 10 am-3pm**

At Bungonia Community Hall and the Towrang Stockade. Speakers:

Tom Bryant: Tracing Argyle Road and Old South Road; **John Jervis:** Towrang Stockade's convict history.

\$20 includes morning tea, display, and lunch. Towrang tour is optional.

For more info, contact Diana
4844 4234; 0448 270 322

HARPER'S MANSION TWILIGHT BOOK TALK:

**"The Good, the Bad and
the Downright Dodgy"**

This Harper's Mansion fundraising event is on Saturday 22 April, in the Kitchen Garden Room at Berrima Public School, 4-6 pm. Cost is \$30.

Historians Jan Worthington and Ann Beaumont will engage in a most stimulating and amusing discussion about the respective subjects of their latest books, Edward Charles Close (1790-1866) and Laurence Hynes Halloran (1765-1831) and their lasting impact on the colony.

Research Fees

Research fees for non-members:

\$25.00 per hour or part thereof for telephone and postal enquiries.

\$5.00 per hour or part thereof for enquirers who attend the archives and carry out their own research.

Would you consider . . .

As we all know, Australia Post has significantly increased their postal charges and, as we have a sizable membership, the cost for postage each month is quite substantial.

It would help us immensely if you agreed to receive the newsletter by email. For those of you who prefer receiving the newsletter by post, we assure you the printed version will continue to be issued.

Enjoyable and Enlightening

At our general meeting in March, James Walters from Canberra gave a fascinating talk on the history of photography and how it emerged in part from the 'camera obscura' used as a technique by painters.

He showed a selection of images to illustrate his "Verisimilitude" theory of art and photography, which was a revelation to many in the audience.

James also provided useful hints on how to preserve photographs and gave useful tips on image scanning techniques and equipment.



Our President's wife, Chris Moore, provides James with well-earned refreshments after his presentation

April guest speaker

Dr Peta Seaton

'From the Bear Pit to the Trenches - Still Digging in Ancient Jordan'

At our meeting on Thursday, 27 April, Dr Seaton will discuss her doctoral work at Teleilat Ghassul in Southern Jordan, life on the Pella dig, and the wonderful people and places of Jordan.

Dr Seaton attended Sydney University where she received a Bachelor of Arts (Hons) in Archaeology. She worked in the television industry from 1983 to 1987 and then as press secretary and adviser for several State and Federal members of Parliament.



From 1996 Dr Seaton was a member of the NSW Legislative Assembly representing the Southern Highlands for the Liberal Party until her retirement prior to the 2007 election.



Dr Seaton has maintained a long-standing interest in Near Eastern archaeology and research. She has been a member of the University of Sydney Pella Excavation project in Jordan since 1979 and specialises in the period between 4500-3500 BC, when Chalcolithic communities in the Levant began the earliest forms of urban and intensive agro-industrial life

Dr Seaton lives in Moss Vale. Currently she runs her own strategic policy and business consultancy, drawing on her background in government, as a former Member of Parliament, and in advertising and media. She is the Chair of Australian Hearing, an Associate Director of the BDCU Alliance Bank and has been a non-executive Director of the Bradman Foundation and CARE Australia. She continues her archaeological research in Jordan.

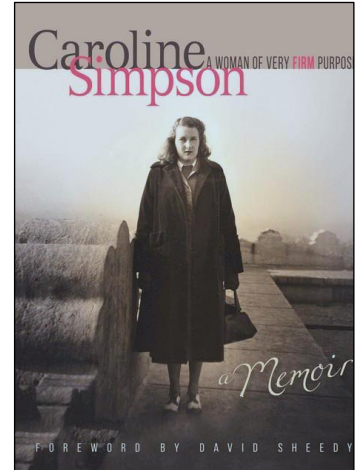
New book in our library

'Caroline Simpson: a Woman of Very Firm Purpose' a memoir by Louise Dobson

Caroline Simpson was born into Australia's famous Fairfax family. She grew up enjoying considerable privilege yet also endured deep heartache.

Over time, she forged her own unique place in Sydney's history, championing National Trust and other heritage projects.

Behind the scenes, often unknown to the general public, she was one of Australia's great philanthropists, supporting a wide range of causes and individuals.



In this beautifully produced book, Caroline's eldest daughter Louise joins with Michael Collins, a writer and researcher, to gather together the memories of some thirty interviewees. The result is an inspiring celebration of Caroline Simpson OAM, through the eyes of her family, friends and associates.

Caroline is described as a most enigmatic figure. To some she appeared fearsome, a strong individual with an acerbic tongue who made sure of getting her own way. To many others, however, she was a profoundly inspirational figure, a hard worker who achieved great and worthwhile objectives.

This memoir, complemented by many photographs and by reproductions of artworks from Caroline's personal collection, is heralded as a fine portrait of a resolute, never-to-be-forgotten personality from Sydney's recent history, a woman who overcame so much to achieve so much more.

The memoir's author Louise Dobson contacted our Society recently and offered us a copy of the book. She said her mother was a passionate supporter of Australia's heritage, at one stage owning Harper's Mansion in Berrima. Louise's parents also owned Newbury Farm at Sutton Forest, where she often spent school holidays and where her father Philip Simpson eventually retired.

Linda Emery was delighted to accept a copy of the book for our library at the archives, most especially as Caroline was a former member of our Society.

Louise hopes her mother's story will inspire many readers, especially other women. We have invited her to speak to our members at a monthly general meeting, hopefully in August this year.

Mittagong rail station's history

An overview of the heritage of Mittagong Railway Station, compiled by Philip Morton, was presented in the previous newsletter and continues here.

As related previously, the Great Southern Railway opened from Picton to Mittagong on 1 March 1867, and to Bowral and Moss Vale on 2 December that year. Thus 2017 marks the 150th anniversary of Mittagong, Bowral and Moss Vale stations.

In anticipation of the Southern Railway opening to Goulburn in 1869, the Railways purchased extra locomotives and rolling stock from England.

Nine E17 class goods locomotives were bought from Robert Stephenson & Co and nine G23 class locomotives for passenger services from Beyer Peacock & Co, Manchester. These entered service from 1865 as did additional rolling stock obtained including wagons for goods services and rigid-frame, eight-wheel passenger cars.

The Southern Railway was progressively extended to Yass, Junee to Harden by 1878 and opened to Albury on the Victorian border in 1881.

By the mid-1880s, due to increased rail traffic, a two-storey Railway Refreshment Room opened at Mittagong, providing food, beverages and beds. As well, the original platform was extended by some dozen yards (15 metres) and a large parcels office and new toilet facilities were built.

Cattle holding pens had been installed in 1873 at the station and sheep races were added in 1885. Livestock raising was a major activity in the district and generated greater traffic at the railway yards, as did an expansion of mining industries on the outskirts of Mittagong from the 1880s.

In 1880 the Australian Kerosene, Oil and Mineral Company (AKO) extended a private railway from its Joadja Creek shale mining works to terminal sidings at a transshipment depot it opened on the main line. The depot was located at the south end of Mittagong railway yards, near Bessemer St.

AKO established retorts and a refinery at the works to produce kerosene and lubricating oils as well as items such as candles, soaps and waxes. These were transhipped to Sydney via the company line to Mittagong. AKO also established orchards and vineyards at Joadja. Fresh fruits including apples, pears, cherries, plums, apricots and grapes were packed and sent by rail to Sydney.

The company sidings at its Mittagong depot were so arranged that Joadja trains could be unloaded at a dock and goods transferred into Government Railway wagons on a lower level. The company railway also provided a basic passenger service.



The AKO Joadja Siding at Mittagong, c1890

Another private railway was built running parallel to the Joadja line on its approach into Mittagong.

Plans were initiated in 1883 to open a coal mine at a gorge of the Nattai River, a few miles northwest of Mittagong. The Mittagong Coal Mining Co was registered and acquired some 580 acres of land. It commenced mining and built a private four mile (7 km) standard gauge railway from the colliery to the township. The line opened in 1888. It skirted Nattai reservoir and then ran parallel with the Joadja line up to the western side of the main southern line.

As the company's coal seam proved to be the best steaming coal in the Commonwealth, the Railway Department contracted to be supplied with it. The company locomotives were kept busy hauling the Railway's trucks from the coal loaders at the mine to the junction with the main line at Mittagong.

Unfortunately the seam contained a band of stone near the base. Initially the company flourished but, as a result of too much stone mixed in the coal, the Railways cancelled the contract and the company was forced to cease operations in 1889. The mine was acquired by new owners and the name was changed to Box Vale Colliery Company. With the onset of the bitter 1890s depression, the company lost its main contract which proved to be a major catastrophe and it closed in 1896. A section of the old colliery line became a walking track in 1996.

In 1891 Mittagong Station's Railway Refreshment Room was closed and replaced with one built at Moss Vale. This was at the request of Governor Baron Carrington who alighted at Moss Vale for his country residence Hillview, at Sutton Forest, and preferred not to be kept waiting at Mittagong by a refreshment stop. Mittagong Refreshment Rooms opened briefly again during World Wars I and II.

By the 1890s Mittagong station's platform fronted the main through line, rather than the loop it had previously faced. This change was achieved by diverting the main line at the platform's north end onto the former loop which then exited the station southward along a new main section to proceed through the Mount Gibraltar tunnel to Bowral.

The section of the old main line replaced by this reconfiguration served from 1891 to 1899 as a Government trachyte quarry siding on Mt Gibraltar ridge, where ballast was obtained for railway use.

By the early 1900s, passenger and freight traffic had grown considerably on the Southern Line. The Joadja Railway, however, was shut down in 1908, due to the impending closure of the shale works.

On the main Southern Line, rail wagons continued to haul live sheep and cattle to markets in Sydney. Wheat production had expanded significantly in southern districts during the 1890s and, as exports grew, ever greater loads were carried by rail. With this growth in rail traffic, delays became ever more frequent, particularly on the steep grades of the Picton-Mittagong section.

Locomotives headed to Sydney from the south had a relatively easy run except beyond Mittagong, where trains had to be hauled up to Colo Vale and then up to Hill Top before reaching Picton. Even with refuge sidings, by the early 1900s the section became a bottleneck as traffic volumes increased. Delays meant wastage of coal and water.

Duplication of the line

Requests began in the 1890s for the Southern Line to be duplicated but 20 years passed before work commenced, it being an expensive and complex undertaking for the NSW Railways. Duplication of the line between Bowral and Goulburn eventually began in 1913 and was completed in 1915, due to the terrain being relatively level.

It had been decided to replace the entire Picton to Mittagong section with a double-line deviation via Bargo, Tahmoor, Yerrinbool and Aylmerton.

Residents along the original rail line, fearing that a complete closure would cause them inconvenience and loss, appealed to the Railway Commissioners. They proposed that just a new, single Down track be built with the original line retained as the Up line (to Sydney). A compromise was reached: while the double track via Bargo would proceed as planned, the old single track would be kept in local service as the Picton-Mittagong 'Loop Line'.

The deviation required heavy construction work, including a Bargo River viaduct and the building of four tunnels. It opened in July 1919.

The old loop line connected with the new main line at Braemar and services operated until the 1980s. When derailments or landslides blocked the main line, trains were diverted over the loop line.

At Mittagong Station, major track relocation work and new structures were required for duplication of the line. A signal box, small timber waiting room and footbridge were built by 1919 for a new Down platform on the duplicated line.

In 1967 the Centenary of Mittagong Station was celebrated. The Hon T L Lewis, NSW Minister for

Lands and Mines, unveiled a plaque mounted in a block of trachyte stone at the front of the station. Representatives of both the Royal Australian and Berrima District Historical Societies were present, signifying the importance of the occasion.



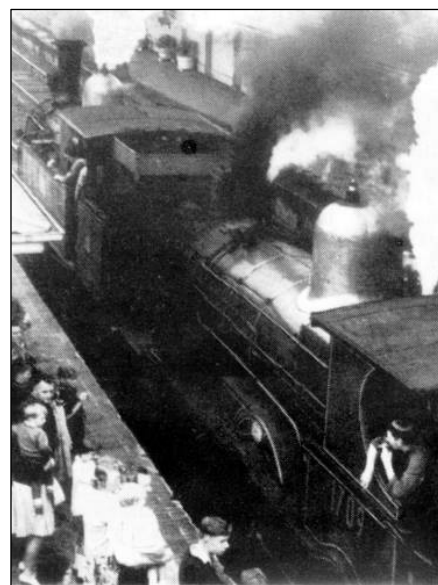
The event was described in the *Berrima District Post* of 7 March 1967: "Every vantage point was taken as five hundred people crowded onto the platform awaiting the arrival of the train. The Police Pipe Band played in the square. It was the biggest day ever for Mittagong."

Mr T Boyle, representing the Commissioner for Railways, stated in his address that while the line was being extended from Mittagong to Goulburn in the 1860s, Cobb & Co coaches ran a service to Goulburn from Mittagong linking with the railhead. In those days the train trip between Sydney and Mittagong took four hours.

Representatives from Wingecarribee Shire and Bowral Municipality were welcomed by Councillor G Elliott, President of Mittagong Shire Council who stated that it was mainly from the growth of the railway to Mittagong that industry in the area had grown so.

The year 1967 also heralded the end of the steam era, as most services were converted to diesel by 1969.

The Mittagong railway precinct, one of the original major stations along the Great Southern Line, is today an important regional complex and of state heritage significance.



Mittagong Station's fine Victorian Georgian railway buildings remain substantially intact. They form an important civic landmark in Mittagong's townscape.

Australian Heritage Festival 2017

Heritage Week, held annually by the National Trust in April, has been expanded and rebranded this year as the Australian Heritage Festival.

It is Australia's biggest community-driven heritage festival, *supported by the Australian Government's National Trusts Partnership Program*. It provides an opportunity for communities, individuals, local governments and organisations to celebrate the places and events that have shaped our heritage.

Our shared heritage is rich with the voices of many cultures. This year's festival theme is 'Having a Voice' and participants are encouraged to absorb stories from every corner of our society.

NSW's contribution sees over 500 events attended by up to 200,000 visitors each year. This year's heritage festival runs from 18 April to 21 May. A listing of event locations and details is available at nationaltrust.org.au/ahf/nsw and on social media.

Our Society is hosting two events: an exhibition of historic pictures at Moss Vale Civic Centre Foyer Gallery, and a unique display of convict bonnets at Berrima District Museum. More detail follows here.

Society's collection on display

"Heritage of the Wingecarribee Shire Captured in Pictures"

At the Foyer Gallery, Wingecarribee Shire Council Civic Centre, Moss Vale, our Society is exhibiting a display during April of photographs and paintings from the Society's archive collection.

The exhibition's purpose is to illustrate the local district's history and heritage. The images portray people, places and activities from earlier periods and capture everyday life as it once was in various town and rural localities.



Fitz Roy Iron Works painted by Percy Lindsay, 1942

The Society is grateful to Jenny Kena, the WSC's Cultural Development Officer, for the opportunity to mount this display. It allows us to showcase some of the gems in our collection to the general public and to highlight the valuable role our Society plays in the local cultural community.

The Foyer Gallery is a community exhibition space run by Wingecarribee Shire Council. An annual program of exhibitions is presented in the Gallery showcasing principally the work of local artists and cultural groups. The Foyer Gallery is committed to representation from artists who live in the local area and to the fostering of cross-disciplinary and cross-cultural practices that reflect the dynamism and diversity of culture in the Southern Highlands.

Members are encouraged to inform family, friends and neighbours about the exhibition and to visit the Gallery themselves. There has been no advance publicity as we have assembled this exhibition at short notice at the request of Council to fill in for a scheduled display which had to cancel.

The Society has already booked a month next year for an exhibition of a selection of more significant artworks, including oil and watercolour paintings of people and local scenes from the 19th century. This exhibition will be curated by Archivist Linda Emery, and coordinated by Denise Mackey and Roberta Stove, our Conservation Team.

The photographs and paintings on display in our current exhibition during April at the Foyer Gallery were selected by Denise Mackey, who was guided by Linda Emery and assisted by Ros Dale.

The resulting exhibition is most pleasing to behold.



Denise and Ros on the job at the Foyer Gallery

Stitched with Love at Museum

AN EXHIBITION OF CONVICT BONNETS

dedicated to our pioneering ancestors

An exhibition at Berrima District Museum has been assembled by members of the Southern Highlands Chapter of the Fellowship of First Fleeters.

This is an Australian Heritage Festival event which should be of interest to many of our Society's members and local residents as well as first fleeter descendants.

Local First Fleeter members and their friends have been busy creating bonnets, stitched with love, in honour of convict women with descendants in the Southern Highlands of NSW.

This event was inspired by 'Roses from the Heart', a convict project initiated by Dr Christina Henri at the Cascade Female Factory in Hobart

The display will be officially opened on Wednesday 19 April, but will be on show each day from Easter Saturday for visitors to the museum.



Bonnet made by Gwen Herbert,
dedicated to convict Deborah Ellam.

A total of twenty six convict women's bonnets will be displayed in the museum's Klein Room, in two large central cabinets. A woman's name and ship are stitched on each bonnet and its display tag will provide information about her crime and sentence.

More details about each of the women will also be provided in a book accompanying the display.

A visual presentation providing general information about the story of the bonnets and about the First Fleeters has been compiled by Wendy Selman of the First Fleeters Chapter. This will be screened in the room on a large television monitor.

Background information provided by the local First Fleeters includes the following details. In 1788 the First Fleet landed at Camp Cove in Port Jackson with a 'cargo' of convicts who helped establish the penal colony. One in five of the convicts arriving between 1788 and 1823 was female and made up the colony's largest group of female colonists.

Up to around 25,000 women were transported to Australia. The typical convict woman was aged in her twenties. She was from England or Ireland and had been convicted of robbery and sentenced for seven years as punishment for her crime. She was single and could read, but not write. Many convict women were first offenders and given sentences of transportation for crimes that we would consider quite minor, such as pickpocketing or shoplifting.

For the women, transportation would have seemed perilous as well as opening new possibilities. The climate was different, the environment unfamiliar, the plants and animals and even the light seemed different - over the oceans to a land of myth.

Female convicts were sent directly on arrival to a female penitentiary, known as factories. Some did not live in, but were housed nearby and went to the factory every day for work. Many only remained a day or so before they were assigned to settlers to work as domestic servants.

Many women were married soon after arrival. They were lined up at the factory and a man would drop a scarf or handkerchief at the feet of the woman of his choice. If she picked it up, the marriage was virtually immediate.

BERRIMA DISTRICT MUSEUM is at the corner of Market and Bryan Sts, located at the southern end of historic Berrima village. The museum is open Wednesdays to Sundays from 10am to 4pm and every day during NSW school holidays.

The Heritage Festival exhibition may be viewed from 15 April (Easter Saturday) to Sunday 21 May.

Museum admission is \$5 for adults, but free for children, students and for our Society members.



The female penitentiary, Parramatta. A watercolour by Augustus Earle, 1826. National Library of Australia.

Berrima District Historical & Family History Society Inc

PO Box 131 Mittagong NSW 2575 ☎ Telephone / Fax (02) 4872 2169
email: bdhsarchives@gmail.com ☎ web: www.berrimadistricthistoricalsociety.org.au

- ARCHIVES:** Cnr Old Hume Highway and Bowral Road, MITTAGONG.
OPEN: Mondays, Tuesdays 10am-4pm and Saturdays 10am-1pm. Closed Public Holidays.
Library collection contains reference books, journals and newsletters of other societies.
- MUSEUM:** Market Place, Berrima. Tel: 02 4877 1130. Email: bdmuseum@bigpond.com
OPEN: 10.00am to 4.00pm, Wednesdays to Sundays, and during school and public holidays.
Museum Committee: John Schweers (Manager, Tour Bookings), Harlan Hall (Project Manager), Lyn Hall (Graphics, Exhibitions), Sylvia Carless (Roster), Harold Wall (Human Resources), Alan Hornsby.
- MEMBERSHIP:** Any person wanting to join the Society may do so at any stage during the year by completing a form and paying the appropriate fee. Joining Fee \$10.00 - Single \$25.00 - Family \$35.00.
- AFFILIATIONS:** Royal Australian Historical Society, NSW Association of Family History Societies, Museums Australia Inc & Regional Chapter.

If undelivered return to:
Berrima District Historical & Family History Society Inc
PO Box 131
MITTAGONG NSW 2575
Berrima District Historical & Family History Society Inc
Newsletter
Print Post Approved
PP100001055

PRINT
POST
100001055

POSTAGE
PAID
AUSTRALIA

PATRON:	Mayor of Wingecarribee Shire: Mayor Ken Halstead		
President:	Mr Bruce MOORE	4872 3762	actmoore@bigpond.net.au
Snr Vice President:	Mrs Leonie KNAPMAN	4871 1804	
Jnr Vice President:	Mrs Linda EMERY	4883 4271	lemery75@southernphone.com.au
Hon Secretary:	Mr Philip MORTON	4883 7862	flipmort@bigpond.com
Hon Treasurer:	Mr Ian MACKEY	4861 2933	
Archivist:	Mrs Linda EMERY	4883 4271	
Museum Manager:	Mr John SCHWEERS	4872 1660	schweers@hn.ozemail.com.au
Membership:	Mrs Peg HARVEY	4861 4521	
Newsletter Editor:	Ms Lavinia FORD	4869 4038	
Research Officer:			

Management Committee: President, Vice Presidents, Secretary, Treasurer, Museum Manager, Research Officer, plus members Peg Harvey (Minute Secretary), Denyse Barker, Carolyn Dougherty, Jenny Frost and Denise Mackey.