

Founded 1960

BERRIMA DISTRICT HISTORICAL & FAMILY HISTORY SOCIETY INC

NEWSLETTER
No 464 August 2014

PO Box 131 Mittagong NSW 2575 Telephone / Fax 0248 722 169
Website: www.berrimadistricthistoricalsociety.org.au
Email: bdhsarchives@gmail.com

ABN 29 362 616 937

PATRON:

Mayor of Wingecarribee Shire: Councillor Juliet Arkwright

President:

Mr Bruce MOORE 4872 3762 actmoore@bigpond.net.au

Snr Vice President:

Mrs Linda EMERY 4883 4271 lemery75@southernphone.com.au

Jnr Vice President:

Mrs Leonie KNAPMAN 4871 1804

Hon Secretary:

Mr Philip MORTON 4883 7862

flipmort@bigpond.com

Hon Treasurer:

Mrs Patricia DORIS 4872 3313

Archivist:

Mrs Linda EMERY 4883 4271

Curator - Museum:

Mr Bob WILLIAMS 4889 4405

Membership Secretary:

Mrs Peg HARVEY 4861 4521

New sletter Editor:

Ms Lavinia FORD 4869 4038

laviniachurch@dodo.com.au

Research Officer:

Mr Max ROGERS 4861 3526

robert.rogers2@bigpond.com



ARCHIVES:

Cnr Old Hume Highway and Bowral Road, MITTAGONG.

OPEN: Mondays, Tuesdays 10am-4pm and Saturdays 10am-1pm. Closed Public Holidays.
Library collection contains reference books, journals and newsletters of other societies.

MUSEUM:

Market Place, BERRIMA. Tel: 02 4877 1130 Email: berrimamuseum@bigpond.com OPEN: Saturdays, Sundays,
NSW Public and School Holidays (except Good Friday, Christmas Day and Boxing Day) 10.00 am to 4.00 pm.

MEMBERSHIP: Any person wanting to join the Society may do so at any stage during the year by completing a form and paying the appropriate fee. Joining Fee \$10.00 - Single \$20.00 - Family \$33.00.

AFFILIATIONS:

Royal Australian Historical Society, NSW Association of Family History Societies, Museums Australia Inc & Regional Chapter.

GENERAL MONTHLY MEETING

AUGUST MEETING:

Thursday 28 August 2014 at 2pm

VENUE:

Society Research Centre, Old Council Chambers Building,
Bowral Road, Mittagong

GUEST SPEAKER:

John Wylie

John Wylie from the Sydney Speleological Society and caving expert; will present an illustrated history of the Wombeyan Caves Reserve created in 1864 and through to the present day.

AFTERNOON TEA:

To be served following the speaker - Members - please bring a plate or a donation.

Inside this month ...

Diary Dates	2
Old Hume Highway 31	5
Lutwyche School	6
From the early newspapers	7

And more ...

SEPTEMBER MEETING: Thursday 25 September 2014 at 2pm

VENUE:

Society Research Centre, Old Council Chambers Building,
Bowral Road, Mittagong

GUEST SPEAKER:

Bernadette Mahony



Diary dates

AUGUST

- 14 Management Committee Meeting
- 28 General Monthly Meeting

SEPTEMBER

- 7 Father's Day
- 11 Management Committee Meeting
- 20 School holidays commence
- 25 General Monthly Meeting

OCTOBER

- 1 **MEMBERSHIP FEES DUE**
- 6 School holidays conclude
- 9 Management Committee Meeting
- 23 General Monthly Meeting

From the President's Desk *Bruce Moore*

Where did that dreaded word **retirement** come from? It means withdrawal, departure, leaving.

I'm not withdrawing or departing any time soon, unless it's for a brief holiday. It's a complete misnomer describing most 'retirees'. Most people I know say they cannot fit everything into their day and have to keep a diary to track their week.

Perhaps a better description would be **passionate avocation** be it voluntary or paid work, this becomes your choice of what you always wished to do.

Our three speakers on 24th July certainly showed their passion when describing their research and latest book on Bowral trachyte. The Archives was packed to capacity and the appreciative audience thoroughly enjoyed the slides and talk given by the Irving boys joined by former architecture student, Ron Powell.

This was a much better result than I had with my Uncle Clarrie who, when watching my well-prepared slides after a recent overseas trip, was the first to nod off after the lights went out. I think the all-time record for a dozing guest was 3 minutes flat.

July became a busy month for us as 5 committee members travelled to Yass on the 16th to be part of an inaugural meeting of the "Highway 31" proposal, similar to the American Route 66 tour.

Councillors also were present and seemed excited at the tourist possibilities suggested by convenor Frank Burke.

Attending two launches, one by Tourist officer, Steve Rosa and his team who issued a new Southern Highlands map and guide for visitors and residents alike.

This was closely followed by Leah Day's proposal to launch a Sesquicentenary (150 years) celebration of lighting the hot blast furnace in Mittagong next year in May. It seems the whole town is behind this. Which is a good place to be, because if you were in front, you could seriously singe your whiskers!

That's no joke, because when the Bessemer furnace was originally fired up, one man stood too near and was blinded in one eye, the other badly damaged.

Finally, we see the Museum extension building at Berrima is taking shape. The framework is up and one fireproof wall is complete. It is now looking like a real building.

On a lighter note; I am told thieves broke into the Mittagong police station and stole their bathroom equipment including complete toilet suites. Police now have nothing to go on!

Big crowd at trachyte talk

A capacity crowd attended our July meeting for the much anticipated presentation and book signing by the authors of "Sydney's Hard Rock Story" a recently released book on Bowral trachyte.

About 80 people filled the upstairs meeting room at our Research Centre in Mittagong and enjoyed the very well-illustrated talk about the hard and durable stone first quarried at Mt Gibraltar in 1886.

The book's origins and its making were explained by the authors - Robert Irving, Ron Powell and Noel Irving - who took turns to speak and, with many illustrations, conveyed the stone's beauty and the extent and surprising variety of its multiple uses.

Our thanks to the three of them for their entertaining and enlightening presentation. Thanks also to those

members who organised the event and helped with arrangements.



Noel, Bob and Ron



Capacity crowd at meeting



Enjoying a cuppa afterwards

Membership fee increase

The Management Committee has decided that the Society's annual Membership Fee needs to rise. It is to increase from \$20 to \$25 for a single membership and from \$33 to \$35 for a family membership and will apply from our Financial Year starting on 1 October 2014.

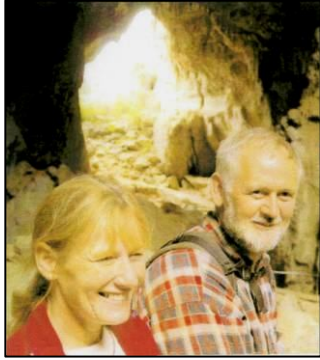
The increase is due to rising costs and it is hoped that members will understand that the new fee is moderate in comparison to similar community organisations and other historical societies.

Membership details

Please note that all membership enquiries and changes of address details should be addressed to the Membership Secretary, c/- the Society's postal address or email to bdhsarchives@gmail.com

August talk on Wombeyan Caves

At our meeting on 28 August, John Wylie, a caving expert, will speak about the creation in 1864 of the Wombeyan Caves Reserve and provide an illustrated history of the reserve through to the present day. The caves are located to the west of the Wollondilly River.



John will also briefly talk about his recent book *Cave Guides of Wombeyan 1864-2012*.

John Wylie is married with four children and resides mainly on the Bindook Highlands in NSW and occasionally at Blackheath. His introduction to caving was with the scouts at age

14 in 1969, on Tasmania's north-west coast. He has been caving ever since.

In 1993 John joined the Sydney Speleological Society (a caves exploration and scientific study group) and in 1997 became its Leader and State Coordinator for a number of karst areas within NSW, being Wombeyan, Colong, Billys Creek, Church Creek and Lord Howe Island, which he has been documenting ever since. A karst is a barren region of limestone or dolomite characterised by underground caves, drainage systems, sinkholes and gorges.



Wombeyan Caves were formed over many hundreds of thousands of years by the constant dripping of limestone-impregnated water. Before the arrival of Europeans, Wombeyan Caves and the Wollondilly River valley were favourite areas of the local Indigenous people.

The caverns with their stalagmites and stalactites, tinted stones and tapestries, frozen cascades and waterfalls have been a drawcard to adventurers since the caves were discovered by colonial explorers early in the nineteenth century.

Museum and SH 1200 progress



Our New Exhibition Gallery is taking shape! Harlan Hall reports that the building is coming along well and there's been a lot of activity behind the scenes also.

Donations continue to be received for our Southern Highlands 1200 Anzac Centenary Project; these are held in trust by the Southern Highlands Foundation. Donor support is now very close to the \$30,000 mark. This generosity is greatly appreciated and hopefully the total will continue to rise; tax-deductible donations may be made at the sh1200.org website.

Recent grant support received includes:

The Veolia Mulwaree Trust has awarded \$8,452 and Wingecarribee Shire Council \$5,500 towards a new visitor disabled ramp and verandah. The Australian Anzac Centenary Grant Fund has awarded \$12,210 towards one exhibition case and the Wingecarribee Shire Community Assistance Grant Scheme has awarded \$6,000 towards a second exhibition case.

Three major grant applications have been submitted this month for part funding to help with the SH1200 Exhibition.

Breaking news! The Australian War Memorial's travelling exhibition "A camera on Gallipoli" will open on 17 January 2015 for a month's stay in our new exhibition space at the museum.

A BIG THANK YOU to all of our volunteers who have been on the job building, our generous suppliers of goods and services, and Society member volunteers.



The canoe shed that used to be on the site

2014 RAHS Conference Program

The Annual State History Conference of the Royal Australian Historical Society's is being hosted this year by our Society and it will be held in October at Mittagong RSL Club. Our Society last hosted the conference 11 years ago, and is looking forward to once again welcoming 'the Royal' to our beautiful region and giving members of affiliated societies the chance to explore the rich history and heritage of the district. Members of BDH&FHS, being of an affiliated society, receive discount on bookings and may attend for either one or both days. Members are encouraged to attend. Booking form and details are on the RAHS website or may be obtained from our Secretary Philip Morton. Program details are provided here.

Friday 24th October 5:30pm - 6:30pm:

Pre-conference drinks at Berrima District Museum

Saturday 25th October

Session 1 Welcome and Keynote Address

RAHS President's Address - Associate Professor Carol Liston

Presentation of 2014 Cultural Grants and Certificates of Achievement

The Lesley Muir Address - Speaker Bill Gammage

Session 2: Moving Mittagong - Learn about histories of Mittagong and successful fundraising campaigns that will resonate with the broader history community.

Linda Emery - Overview of Southern Highlands. An insight into the establishment and growth of the region and its importance in regards to New South Wales history and heritage.

Leonie Knapman - Mittagong Boys' Home. Insights gathered from twenty years of research into the history of the home and its former residents.

Harlan Hall - Fundraising. A look at moving history forward through successful fundraising campaigns.

Session 3: Moving About - Examining the significance and impact of roads to the people of NSW and communities throughout.

Vince Taranto and Denis Gojak (Roads and Maritime Services) - Hume Highway. Linking the nation's two largest state capitals, the Hume Highway has its own rich history. Ken McNally - Remembrance Drive

Carol Liston - Road Research. Carol will look at the road files held at State Records NSW and how to access them to find out more about the history of a road in any local area in NSW.

Conference Tours - Hillview, Christ Church Bong Bong, Fitz Roy Iron Works and Blast Furnace site. Please note that early bookings are essential for the tours as numbers are limited.



Percy Lindsay's 1942 oil painting 'The Cradle of Australia's Iron Industry' (Fitz Roy Iron Mine, Mittagong).

Sunday 26th October

Session 4: Grant presentations and moving history forward through better governance.

Discussion on latest governance developments that historical societies should be across.

Session 5: Moving Societies - advice on future directions for historical societies including advocacy, technology and collection management skills.

Kate Mackaness - Advocacy

Fiona Burn - National Archives of Australia

Christine Yates - Collection Management

Session 6: Moving People - histories of migration and war that create emotional connections to our past.

Michael Organ will deliver a detailed analysis of Governor Lachlan Macquarie's punitive actions against the Aboriginal people of New South Wales in 1816 revealing the extent of war engaged in by local military forces and the colonial authorities, along with a corresponding cover-up of those activities and outcomes. This analysis has implications for our present day reading of Australian history and the ongoing debate over recognition of the so-called Forgotten War, especially in light of the ANZAC centennial commemorations.

Richard White - First AIF in Egypt Before the AIF landed at Gallipoli - before Australians generally had even heard of the place that would become so significant in the national imagination - the new recruits arrived in Egypt. Richard's presentation paper provides an overview of some of the experiences of the AIF in a country that had already come to be dominated by Western tourism.

Linda Emery - Who Do You Think You Are? Linda will discuss her experiences on working for this popular TV program with a particular focus on the emotional impact resulting from the combination of solid historical research with captivating story-telling techniques.

Old Hume Highway 31 project

Options for an 'Old Hume Highway 31' organisation were outlined at a formation meeting held at Yass Memorial Hall on 16 July. It aims to lobby for legislation to recognise nationally significant historic roads and thereby establish the Old Hume Highway as Australia's major historical road.

'Old Hume Highway 31' as a single over-arching body would seek to increase the number of visitors coming onto the Old Hume Highway. The establishment of an alliance with the Route 66 Federation in USA has already proved to be most beneficial in this area.

Local councils that spanned the highway from Sydney to Melbourne were invited to send representatives, as were motoring and tourist bodies, local historical societies and other connected groups. The Wingecarribee Shire was represented by its mayor, several councillors and tourism personnel. In attendance on behalf of our Society were members Denyse and Alan Barker, Philip Morton and Carolyn Hutton (who with her husband Jim also represented a Southern Highlands classic car group).

Despite the cold and wet weather, a large group assembled in the warm hall and were treated with excellent home-made morning tea and lunch. There were representatives from several Victorian councils and organisations, NSW councils located along the highway and other interested parties including Ron Collins, the NRMA's regional policy specialist based in Canberra.

Convenor Frank Burke explained that the purpose of the formation meeting was to establish a body that would recognise the historical significance of the entire Old Hume Highway 31 that linked Sydney and Melbourne and support the future sustainability of regional communities along it. As a non-profit body it would be dedicated to increasing the public's awareness and usage of the Old Highway. It would also seek to acquire Federal, State, local, commercial and private support to preserve the history, historic roads, landmarks, regional and cultural communities and lifestyles along the Old Hume Highway.

Our Society made the suggestion that the historically significant Black Bob's bridge could be made a feature of the old highway promotion if funding were found for its restoration. This bridge was built by notable colonial architect David Lennox in the 1830s on the Great Southern Road a short distance south of Berrima. It still stands just off the Freeway behind a Rest Area but is becoming increasingly derelict. Now handed back by the Dept of Main Roads to the Wingecarribee Shire Council, it would make an iconic historic feature for the district, if restored with viewing platforms and signage. The matter is now on the council's agenda.

During the meeting, Frank Burke outlined the many benefits of the scheme, including increased tourism and safety for travellers by the taking of breaks.

Although the Hume Freeway now offers quicker and safer dual-carriageway travel between Sydney and Melbourne and places in between, travellers are no longer exposed to the assortment of regional towns and communities and the rich history and cultural values associated with the Old Hume Highway.

Recreating the Old Highway as a tourist destination would attract visitors who hopefully would stay for longer periods. Day trippers along the Freeway would be made aware of the multitude of facilities for a pleasant break in the bypassed towns.

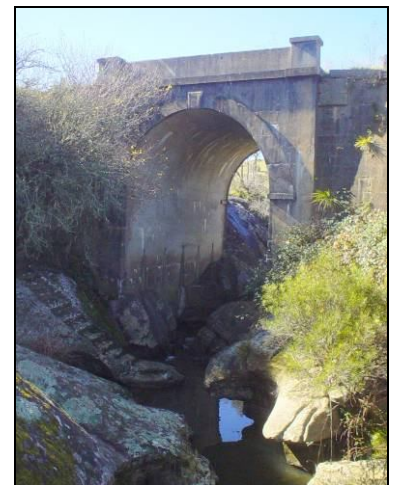
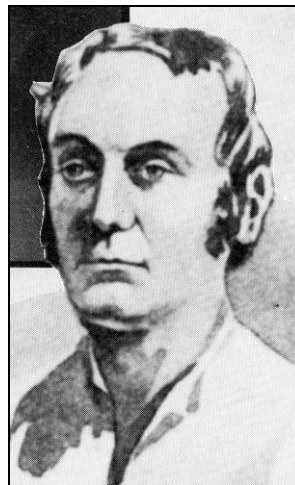
Hamilton Hume, after whom the Highway was named, would be featured as one of the first Australian-born heroes who became a legend. His property, Cooma Cottage, located on the old highway near Yass, would serve as the headquarters for the Old Hume Highway 31 organisation.

Mike Herlihy, an IT expert, explained that a website would be created to offer comprehensive details of all the Old Hume Highway facilities in the one place and chartered accountant Rhys Timms offered some ideas as to what form the organisation could take.

Action to establish the organisation was endorsed unanimously by attendees and a steering committee appointed to drive the organisation forward.

Our Society is keen to support this initiative.

- compiled by P Morton with assistance from D Barker



Hamilton Hume, Black Bob's bridge and Cooma Cottage

Lutwyche Public School at Werai

In the early 1940s families living on farms in the eastern part of Werai were concerned about how their young school-age children were to be educated.

Being over six miles from Moss Vale, it was then quite isolated as very few farmers owned motor vehicles and, even if they did, it was war time and petrol was stringently rationed. The only public transport from Werai to Moss Vale was by rail but Werai Railway Station was too far away from most of the farms for very young children to walk to.

The farmers of the area discussed the possibility of opening a local school and contacted the Department of Education. Approval for a school was given if suitable premises could be found. One of the prime movers was dairy farmer Ted Clough who with his wife Nell was passionate about education for their three daughters and one son. A school was built on land donated by Steve Garbutt on the Moss Vale side of the current Bundanoon Creek Dam which today provides water for parts of the Wingecarribee Shire.

The local farmers built the school with bush-cut timber and corrugated iron. As well as the one classroom it had living quarters consisting of a small bedroom and kitchen. The corrugated iron toilet buildings contained pan type toilets.

The name Lutwyche was chosen after a creek in the area. The Department of Education supplied desks and other items but teachers were unavailable as it was war time. John Caradice came out of retirement to be the first teacher when the school opened in 1943. He travelled by horse and cart from north of Mittagong to the school on Monday mornings and lived at the school during the week, returning home on Friday evenings. Sometimes his wife would accompany him and stay the week to keep him company. They later moved to Moss Vale where some of the students and their parents kept in contact with them.

To fill in the long hours after the pupils went home, Caradice drew and painted maps, including the World, Australia and New South Wales on all the walls and the floor. Other information painted included graphs, dates in history and circles whose size represented the population of various cities. They were in scale and had all kinds of detail and were used for geography lessons.

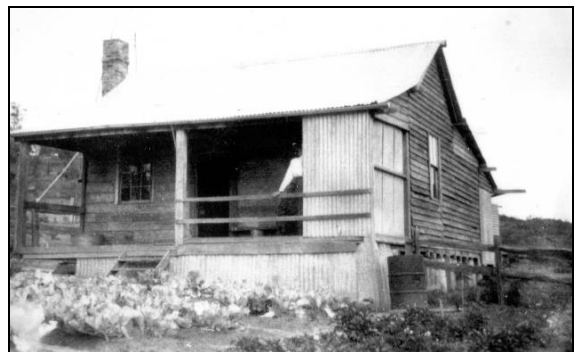
When the war finished he went back into retirement and there were two subsequent teachers. Mr Murphy drove a car from Moss Vale each day and Adrian Budden, a very young teacher, boarded with the Mathisons, (Werai milk carrier) and drove a red convertible sports car to the school. He sometimes gave pupils rides in its 'dickie seat'.

Some of the mothers cleaned the school and the fathers emptied the toilets and kept the grounds tidy. The children of the Clough, Mathison, Mumberson, Walker and Crane families were amongst the pupils and the average attendance was about twelve. All the pupils walked to the school, some quite long distances, always barefoot, carrying their shoes or boots (if they owned any) in their school bags. They often collected wild flowers which the teacher would put in a glass of water.

The school followed the NSW curriculum with all primary school classes being catered for. ABC radio broadcasts were listened to and Moss Vale Library sent out boxes of books for pupils to borrow. Pupils also visited and participated in small schools competitions in the Berrima District. The playground was a large grassy area and on fine days the playtime and lunch breaks were spent playing and running. Sport was mostly physical education, running races and a game called 'rounders', a cricket bat and tennis ball version of softball. Cold and wet days were spent in the classroom where a huge log fire burned. A garden was also cultivated by the pupils.

The school closed at the end of 1948 due to low attendances and a shortage of teachers. Children were then transported in a small bus where they attended Moss Vale Central School or caught another bus to Bowral High School.

There is no trace of the school building now. After his death the 'Steve Garbutt Lounge' was built at Harbisoncare, Burradoo with funds from the sale of his property which included the old school grounds.



Lutwyche School at Werai in 1940s



Class of 1947

These reminiscences are provided by Society member Kathleen Pearce of Mittagong who attended the school.

From the early newspapers

by Carol Nolan

The Mittagong Star

7 December, 1928:

Aeroplane Crash at Hill Top

On Monday morning at 11:15 o'clock an aeroplane (DH Moth, A7-15) in charge of Pilot-Officer D M Carroll, R A F , Middle Brighton Victoria, and Pilot-Officer T A Chadwick, of No. 1 Squadron RAF, Laverton, Victoria, struck a tree in Blackguard Gully, about two miles from Hill Top.

The plane had left that morning from Richmond for Melbourne, and ran into a dense fog near Hill Top. The visibility was so bad that the railway line could not be seen. After striking a tree and leaving portion of a wing on it, the machine somersaulted twice and became entangled in another tree. When it hit the second tree it precipitated Chadwick, together with the seat in which he was seated, about 40ft. to the ground, leaving Carroll hanging head down.

Carroll used his scarf with a piece of wood to draw the swaying machine to the tree and then slid down to the ground.

Chadwick was badly shaken, and after doing what he could for him Carroll started to get assistance. He reached Hill Top about 1 o'clock, when Mr Dan Chalker at once proceeded to the injured man. Dr. Alsop was shortly on the scene.

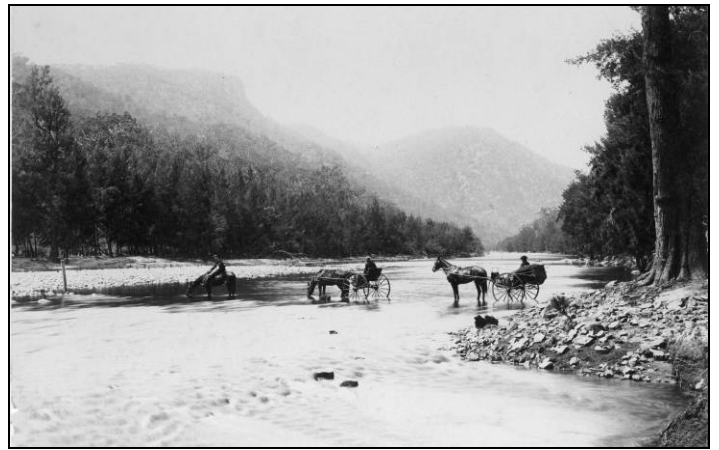
Chadwick had to be carried out through some very rough country to Hill Top about 2 miles distant. The stretcher on which the injured man was carried was made of bags and saplings at the scene of the crash.

The stretcher bearers were Messrs Bert Chalker, P. J. Grose, H. C. Hill, W. J. Peachey and his son.

Chadwick was conveyed by motor lorry from Hill Top to Talgarno private hospital, where it was found he was suffering from severe bruises to his left hip, strained muscles of the back, a dislocated finger, abrasions to the face, cuts on the upper and lower lip, which necessitated four stitches, and a gash in the right leg. Chadwick was removed to Sydney on Wednesday morning, and is now an inmate of the Prince Alfred Hospital.

Carroll apart from being severely shaken, escaped with a small wound on the top of his head and one on his hand.

The engine and instrument board of the plane were salvaged on Tuesday by the RAAF Salvage Corps from Richmond, and taken away by motor truck. The tree in which it was suspended had to be chopped down before the parts could be secured.



Using a new five-foot causeway to cross the Wollondilly River in 1900

24 February, 1928:

Motor Car Washed Away in Wollondilly River

On Thursday evening last, Frederick Augustus Perry of Randwick, travelling in a new Essex motor car, whilst on his way to Taralga through the new Wombeyan Caves road, found that he could not cross the Wollondilly River, so camped the night in his car on the river bank above the high water level.

In the early hours of the morning he found the car to be under water. Unable to start the engine, ropes were put on to try and pull the car out, but it could not be shifted. Next the car went rolling down the stream.

It is estimated that the river rose 22 feet in four hours. The car is insured.

Barrallier [from our correspondent]

5 July, 1957:

The discovery of a new cave at Wombeyan at the week-end by a party of nine cave explorers has caused a mild sensation in that locality. A car conveying some of the party travelling to Wombeyan skidded on a wet road in front of Wollondilly post office and capsized. No one sustained any injury.

26 July, 1957:

The valley of Burraborang is being evacuated in readiness for submerging when the Warragamba Dam is complete. A well-known landmark, the old stone St Paulinus' church completed in 1872, is shortly to be demolished and the last Mass was celebrated there on Sunday by Father Ekerick of Campbelltown, a former priest in charge. The Mass was attended by many former worshippers in the old church. Some had left the valley over 50 years ago.

27 December, 1957:

The electric powerline to Wombeyan Caves has been completed and the power turned on. Householders have availed themselves of the opportunity and now have electricity. It has been connected to most homes in the Caves, Bannaby and Hanworth area

DIARY DATES

THURSDAY	14	AUG	Management Committee Meeting	
THURSDAY	28	AUG	Monthly General Meeting	2:00pm at the Historical Society
THURSDAY	11	SEP	Management Committee Meeting	
THURSDAY	25	SEP	Monthly General Meeting	2:00pm at the Historical Society
THURSDAY	9	OCT	Management Committee Meeting	
THURSDAY	23	OCT	Monthly General Meeting	2:00pm at the Historical Society

If undelivered return to:
Berrima District Historical & Family History Society Inc
PO Box 131
MITTAGONG NSW 2575
Berrima District Historical & Family History Society Inc
Newsletter
Print Post Approved
PP100001055

**SURFACE
MAIL**

**POSTAGE
PAID
AUSTRALIA**

THE BERRIMA DISTRICT HISTORICAL AND FAMILY HISTORY SOCIETY NEWSLETTER

is proudly supported by the following organizations that encourage the work of our Society in collecting,
preserving and maintaining the history of the Southern Highlands.

Springetts Arcade