

Founded 1960

BERRIMA DISTRICT HISTORICAL & FAMILY HISTORY SOCIETY INC

NEWSLETTER
No 452 July 2013

PO Box 131 Mittagong NSW 2575 Telephone / Fax 0248 722 169
Website: www.berrimadistricthistoricalsociety.org.au
Email: bdhsarchives@gmail.com

ABN 29 362 616 937

PATRON: Mayor of Wingecarribee Shire: Councillor Juliet Arkwright
President: Mr Bruce MOORE 4872 3762 actmoore@bigpond.net.au
Snr Vice President: Mrs Linda EMERY 4883 4271 lemery75@southernphone.com.au
Jnr Vice President: Mrs Leonie KNAPMAN 4871 1804
Hon Secretary: Mr Philip MORTON 4883 7862 flipmort@bigpond.com
Hon Treasurer: Mrs Patricia DORIS 4872 3313
Archivist: Mrs Linda EMERY 4883 4271
Curator - Museum: Mr Bob WILLIAMS 4889 4405
Editor: Ms Lavinia FORD 4869 4038 lavinias@dodo.com.au
Research Officer: Mr Max ROGERS 4861 3526 robert.rogers2@bigpond.com



ARCHIVES: Cnr Old Hume Highway and Bowral Road, MITTAGONG.

OPEN: Mondays, Tuesdays 10am-4pm and Saturdays 10am-1pm. Closed Public Holidays.
Library collection contains reference books, journals and newsletters of other societies.

MUSEUM: Market Place, BERRIMA. Tel: 02 4877 1130 Email: berrimamuseum@bigpond.com OPEN: Saturdays, Sundays, NSW Public and School Holidays (except Good Friday, Christmas Day and Boxing Day) 10.00 am to 4.00 pm.

MEMBERSHIP: Any person wanting to join the Society may do so at any stage during the year by completing a form and paying the appropriate fee. Joining Fee \$10.00 - Single \$20.00 - Family \$33.00.

AFFILIATIONS: Royal Australian Historical Society, NSW Association of Family History Societies, Museums Australia Inc & Regional Chapter.

GENERAL MONTHLY MEETING

JULY MEETING: Thursday 25 July 2013 at 2pm
VENUE: Society Research Centre, Old Council Chambers Building, Bowral Road, Mittagong
GUEST SPEAKER: Geoff Goodfellow
AFTERNOON TEA: To be served following the speaker - Members - please bring a plate or a donation.

AUGUST MEETING: Thursday 22 August 2013 at 2pm
VENUE: Society Research Centre, Old Council Chambers Building, Bowral Road, Mittagong
GUEST SPEAKER: Leonie Knapman and Philip Morton
AFTERNOON TEA: To be served following the speaker - Members - please bring a plate or a donation.

Inside this month ...

Diary Dates	2
SH 1200 Project	2
Bundanoon Public School	5
Murray Family Canyonleigh	6

And more ...



Diary dates

JULY

- 11 Management Committee Meeting
- 15 School holidays conclude
- 25 General Monthly Meeting

AUGUST

- 8 Management Committee Meeting
- 22 General Monthly Meeting

SEPTEMBER

- 1 Father's Day
- 12 Management Committee Meeting
- 20 School holidays commence
- 26 General Monthly Meeting

From the President's Desk *Bruce Moore*

Who said there are quiet months in winter? Perhaps that was from a quote by an Eskimo market gardener! Not so at the Archives and Museum. We're looking like Santa's little helpers with several books in the pipeline, a Museum extension under way, archival photos now available on the web, new accessions arriving almost daily and inquiries requiring detailed research of land, houses and most important...people.

Knapmans in Nowra.

Senior members Leonie & Greg Knapman recently went to considerable effort to promote our Society at the Shoalhaven History Fair where our local history publications, especially the Cemetery Transcriptions book, attracted considerable interest and generated sales. Many thanks, Leonie & Greg.

Knickers to Knickerbockers in Exeter.

Our June Luncheon showed a terrific example of team effort where, under the guidance of Linda, a fine occasion went off well after a sumptuous meal. We now know a bit more about "flapper fashion" from guest speaker Elizabeth Burness who, during an entertaining and tactile talk helped us imagine the era, styles and

even personalities of the wearers of the 1920s and '30s garments.

Museum open.

The Museum once again open every day of July school holidays - volunteers brave the cold and wet to be there to guide and assist visitors, both young and mature, to enjoy their visit. Lyn Hall from the museum is commencing an initiative which is advertised on P.5

Local historian peeks behind the Iron Curtain.

Well known historian, Geoff Goodfellow will be our speaker in July (25th at 2pm) giving us a glimpse behind the old Iron Curtain. In Geoff's words "This won't be a heavy historical discourse on dates and events, but more a sharing of insights from outside looking in on this post-Soviet era, with a few light-hearted anecdotes along the way to stop people nodding off".

Advance notice appears in this issue of an upcoming talk in August and a tour in September related to historic Mittagong that should be popular with locals - mark the dates in your diary.

Archives opening hours

Opening hours are as follows:

Monday	10:00 am - 4:00 pm
Tuesday	10:00 am - 4:00 pm
Saturday	10:00 am - 1:00 pm



Elizabeth Burness entertains members at the
June luncheon

Our SH 1200 Project

Southern Highlands 1200 Project: Progress Report

- Donations raised so far amount to \$19,105.
- Minor modifications to building plans (require Council approval under Section 96 application):
 - a. Recommended by Bannyon Wood Designs for exhibition fitout: (i) wall height increase to accommodate the 1200 exhibition name panel; (ii) loading doors size increased to allow entry of display cases.
 - b. Modifications recommended by Bruce Stokes, S&I Constructions to reduce building costs: (i) replace concrete floor on fill with timber floor on piers; (ii) replace concrete block internal insulation wall with Hebel Panel.
- "We are Proud Supporters" stickers have been printed for door-to-door business campaign.
- Preparations underway to apply for Arts NSW Regional Capital Grant Funds.
- Commencing June 2014, Bruce Stokes, S&I Constructions, to assist with campaign to secure trade and materials in-kind.

Harlan Hall

Research fees

Research fees for non-members:

\$15.00 per hour or part thereof for telephone and postal enquiries.

\$5.00 per hour or part thereof for enquirers who attend the archives and carry out their own research.

Newsletter

Newsletter Deadline is **25th** of every month. It may be necessary to hold submissions after this date till the following month.

A peek behind the old Iron Curtain

Geoff Goodfellow

Guest speaker at July General Meeting

For this peek behind the old Iron Curtain Geoff won't be giving a history lesson, but more of a discussion about the cold war countries he and his wife have visited in the last few years.

Their recent travels have taken them to the former USSR countries of Russia and Uzbekistan, as well as behind the old iron curtain into East Germany, the Czech Republic, Slovakia, Hungary, Bulgaria, Albania and Poland. The only former iron curtain country they haven't been to is Romania.

In a nutshell, the iron curtain restricted people from these countries travelling outside and also restricted the flow of information in from the non-communist world. It was pretty oppressive stuff, but there were a few legacies to come out of it.

The collapse of the Iron Curtain was in 1989, symbolized by the opening on 9 November of the Berlin Wall. The dismantling of the Soviet Union in December 1991 followed.

There are many complicated reasons for the collapse of the Iron Curtain and Geoff will touch on those. He will also talk about the impact of Soviet rule and what is happening in these countries now as they rebuild their economies, deal with corruption and start giving people a more democratic and free lifestyle.

Outside the Terror Museum in Budapest is displayed a piece of the old Iron Curtain

Members, friends and visitors are welcome to attend the July General Meeting that commences at 2:00pm on Thursday 25 July, upstairs in the Research Centre, Bowral Road, Mittagong.



Upcoming tours and talks for noting

Pictorial tour of historic Mittagong

At the August General Meeting, Leonie Knapman and Philip Morton will present a pictorial tour of historic Mittagong featuring a history in images of Fitzroy Inn, the Maltings and nearby sites, and the old Mittagong town precinct.



The history and function of the Maltings will be looked at along with other major establishments nearby and extending up to the Swimming Pool. The evolution of the town precinct, stretching from the railway station to Main Street (Old Hume Highway), will be shown in a series of images.

This pictorial tour covers a part of what is detailed in our recently updated BDH&FHS brochure "A guide to historic sites of Mittagong" that is handed out at the Visitors Information Centre to those who request information on historic tours.

September Self-drive tour

The Society is conducting a self-drive tour on Thursday 19 September that will start 9:30am sharp at historic Fitzroy Inn, Ferguson Crescent, Mittagong.

The tour will then proceed to Rowe's Hill Cemetery, Old South Road, Lower Mittagong.

Next stop is Marist Brothers monastery and winery. After the tour, lunch will be available to be purchased at the café and the Cellar Door will be open.

Cost is \$7. Please note that only 40 places will be available and bookings are essential. To book, please call or email the Archives.

As parking will be at a premium at the first two sites, please carpool as much as possible. People can meet at the Archives to carpool at 9:15am on the day.



10th Birthday of Book Fair at Nowra

The 10th annual Shoalhaven Family, Local & Cultural History Fair was held over two days at the School of Arts, Berry St Nowra, Friday 14 and Saturday 15 June.

The organising Committee of this annual History Fair at Nowra deserve our congratulations for their staging of yet another successful two day event.

The BDH&FHS has attended the fair regularly, joining with other historical societies and family history groups along with transcription agents, booksellers and historians. The many stands that fill the main hall attract professional researchers and the general public with a variety of family and general history inquiries.



Greg Knapman mans the BDH&FHS stall at the Fair

Not only did we answer many questions about the Southern Highlands, but also provided information on where people could find more about their family and we handed out many copies of our newsletter. As this provided people with our email address, they could contact us directly. Our Research Officer at the archives in Mittagong, Max Rogers, had his first email query the day after the Fair.



Inside the Nowra School of Arts during the 2013 Fair

It is hard to know what books to take for sale at the Fair as the areas of interest of the people attending differ each year. It was our *Cemetery Transcriptions* book that was very popular this year with people who have family buried in the Southern Highlands. As we only had one copy with us, it sold within the first hour. Thankfully the buyer was on a stand across from ours and kindly allowed us to borrow his copy many times over the two days. In responding to further enquiries we were able to refer to our stall neighbour's copy for information regarding relatives buried in our area. One lady had a large number of very early relatives listed in the book, so has ordered two copies, and has since contacted Max with further requests on what we have in our files about her family.

Throughout both days, in a hall next door to the main venue, a variety of speakers gave historically themed presentations

Speakers included: Gail Davis of the State Records Office; Robyn Florance who spoke on German Settlers in the early Shoalhaven; Professor Carol Liston; and Adrian Morgan.

Exhibitors included the Shoalhaven Family History Society; Berry and Nowra Historical Societies; Ancestry.com; Church of Latter Day Saints; Society of Australian Genealogists; and NSW Registry of BDMs.

Shoalhaven Family History Society's Joy Vost and her husband have organised this event for the past 10 years. Unfortunately some doubt exists as to whether they will be able to stage the Fair next year but we hope their situation improves and that this annual event continues. We wish them well and thank them for their great effort.

Leonie Knapman

Details about our popular publication

Cemetery Transcriptions of the Berrima District NSW

This book contains over 10,300 transcripts from monuments in all cemeteries and churchyards of the Berrima District of NSW (now Wingecarribee Shire).

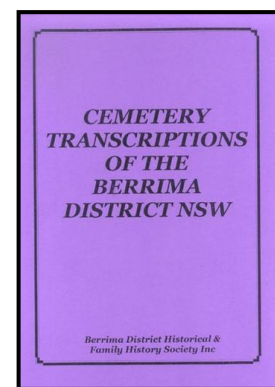
Location maps are included for each burial ground.

The entries are arranged by individual burial grounds and indexed by surname - an invaluable research tool for family and local historians.

Soft cover, spiral bound, 230pp, indexed.

Available for purchase at the Society's Mittagong Archives and the Museum in Berrima for \$35.

It may be ordered online via our website with an additional charge of \$13 for postage.



Work in progress at Museum

Bob & Gloria Williams are progressing with retrieving stored objects from the boathouse. The checking of the museum's accession sheets and the updating and recording of details is proceeding; Lynne and Grahame O'Reilly, volunteers, are writing descriptions of each item and Lyn Hall then photographs each object and all its accessories or collection of parts.

This information is entered into the Mosaic data base by Vicky Murphy and Gloria. Once this is done the object can then be taken for storage in the container at Moss Vale. Eventually the boathouse can be demolished to make way for the new extension.

Gil Wheaton has contributed many sessions down on his knees in all kinds of weather on a weekly basis wire-brushing the historic trolley from the Mount Gibraltar trachyte quarry that resides on the lawn outside the museum. When completed, the trolley will be given a coat of rust inhibitor and a permanent base on a set of cement slabs under each wheel.

The planned WW1 German Internee Berrima River Walk with signage to indicate major features is progressing. Lyn Hall has been working together with Berrima residents Diana Taylor, Alan Terrell and Deborah Blay. Locations for signs and their content (images and text) will be presented at the next Berrima Town Life meeting. Following that, the agreed plans will be conveyed to Mark Pepping at Wingecarribee Shire Council and grant funding will be sought for this historic project.

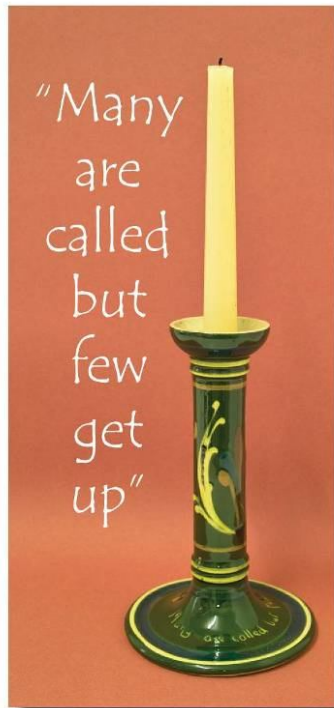
Do you enjoy researching via the internet or visiting the local library and finding out information?

Our museum at Berrima holds over 2,500 artifacts. One of the ongoing jobs is to check and update the record sheets for each of the objects. Some of the earlier accession sheets contain scant detail. For example this candlestick, Accession no 5 was thought to have been made in Ireland c1900.

These days it is so much easier to find out via the internet that there were many potteries in and around Devon 1875-1962 specialising in souvenir pieces. The range of 'motto ware' was extensive.

If this sort of work appeals to you why not get in touch with Lyn Hall c/- the museum email with your contact details. Much of the work can be carried out via the internet in the comfort of your home.

BERRIMA DISTRICT MUSEUM EMAIL
berrimamuseum@bigpond.com



Torquay motto ware candlestick with the inscription scratched through the slip around the base by sgraffito technique. c1900

Bundanoon Public School history

Bundanoon History Group's current display in the Old Goods Shed features storyboards and a collection of early photographs to provide a history of Bundanoon Public School along with many artworks by present day students on the theme 'Our School Today'.

The history of education at Bundanoon goes back a long way. A small school is known to have operated at nearby Jumping Rock from about the 1840s, but the first organised facility in the village itself was a private establishment opened by Emma Harriman in 1867.

In 1871 a provisional (government) school run by Mrs Dinah Osborn commenced in the village's first Primitive Methodist Church building. Although at that time the railway station and the post office were still known as Jordan's Crossing, the school bore the name 'Bundanoon School' from its inception.

This became a public school in 1876. Dinah Osborn continued in charge until May 1880 when the Council of Education acquired land in Church Street and built a timber classroom and teacher's residence.



Bundanoon school building opened in 1880

By the early 1900s, with a growing population, this became inadequate and a new building was sought.

In 1909 a new brick building of two classrooms, able to accommodate 100 pupils, was erected and opened by Hon J A Hogue, Minister for Public Instruction.

Many of the pupils succeeded in a variety of pursuits and were amongst those who served in times of war. The most renowned ex-pupil would undoubtedly be Sir Charles Leslie Rosenthal, a flamboyant figure who served at Gallipoli and in France during World War I, rising to the rank of Major General.



In 1909 a stylish new school building was opened.

Photos: Bundanoon History Group

The BHG display will run for several months in the Old Goods Shed, open on Market Sundays, 9:30 to 2:30, located on Railway Avenue near the station.

Descendants of Murray family contribute to Canyonleigh life

Part Two of a 2-part series compiled by P Morton

In the 1880s, after the death of her husband in 1879 in the mental asylum where he had been admitted in 1864 due to mania and epilepsy, Jane Murray (*nee* Carter) established a property near the junction of Paddy's River and the Wollondilly. She named her property Canyon Leigh from where she operated a Post Office and made land available for a school.

All her eight boys reached manhood becoming honest and hard workers. Benjamin purchased 2000 acres upstream in 1890 and established Glenco, a grazing property. Other sons purchased land nearby and the family holdings grew to over 6000 acres.



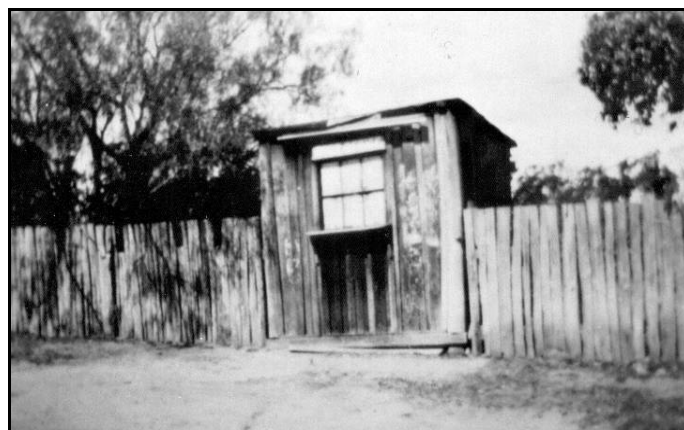
MURRAY BROS: (from left) Benjamin, Edward, Solomon, Richard and James in 1928 at Moss Vale Show. (Photo: Grahame Tooth)

This family estate at Canyon Leigh commenced on the western side of the (now) Hume Highway near Paddy's River and extended to the junction of Inverary Road and Canyonleigh Road and north some way towards Tugalong Road corner (where the present Community Hall and general store are located).

In 1901 Jane moved to Fernbank, a property established by her son James nearer the highway, and she died there in 1911, aged eighty-nine. She was buried at All Saints, Sutton Forest.

The Post Office that Jane Murray opened at her property on the old Taralga road, along which stock was regularly moved, was operated by her son Richard until 1909 and then it was moved to his brother Benjamin's Glenco property nearby.

In 1915 the Canyon Leigh Post Office was relocated by Eva Connor, a granddaughter of Benjamin, to her Kebarbin property, located north on the old Taralga road near Tugalong Road corner (opposite where the Community Hall stands today), being on the stock-route that wound its way southwest from Hoddles Crossroads, crossed Paddy's River at Canyon Leigh and proceeded to Arthursleigh and Taralga.



BUSH PO: The Canyon Leigh Post Office was at Kebarbin property from 1915 to 1949.

The introduction of school buses taking children to Sutton Forest Public School meant the old Canyon Leigh school closed in 1920. By this time most traffic was using the Great Southern Road that had opened in the 1830s with inns located at regular intervals.

Along the stretch from Berrima to Paddy's River, there were the Three Legs of Man at Mereworth, the Queens Arms Hotel at Hoddles Crossroads, the Black Horse Inn, and inns at Hanging Rock and Murrimba. In the 1920s this road was renamed the Hume Highway. At Hoddles Crossroads, another small school that had operated from the early 1900s, also closed at this time.

Throughout the area property owners faced huge difficulties with rabbit infestations and depressed markets in the 1930s.

However, just as the Murrays had established extensive properties west of the Paddy's River highway crossing, so too was land taken up in the more northern area westward from Hoddles Crossroads and out along Tugalong Road where settler Benjamin Carter had established extensive landholdings in the 1830s.

In 1858 Carter's eldest son Edward took over the family properties and extensive grazing lands that extended northwards towards the junction of the Wollondilly and Wingecarribee Rivers and included the fertile Joadja Creek valley.

Edward is credited as the first European to discover the shale-oil deposits at Joadja Creek. Versions vary, but he is said to have become aware in the 1850s of a black outcrop in the valley. This 'fire stone' was well known to Aboriginal people, who had long made fire with it.

Aware that it was a much sought after commodity, in 1873 Edward registered a claim and took up sixty acres at Joadja Creek. Conflict with another claimant meant a lengthy dispute ensued but eventually proved in Edward's favour.

He began mining in 1874 and sold the product to the Australian Gas Light Company. It was hauled up the valley's steep inclines by bullock teams and then carted by wagons to Mittagong.

Attracted by Carter's success, miners flocked to the valley and took out mining leases. Soon the isolated valley boasted up to 400 residents.

In 1878 the Australian Kerosene Oil & Mineral Co Limited was registered with a capital of £50,000. It bought up all the Joadja Creek shale-bearing land (including Carter's claim), built a refinery and established large-scale production.

Edward Carter then concentrated effort on his main forte, farming and grazing, and by the 1880s his holdings included the properties Nandi, The Gap, Tugalong, Bangadilly, Evandale and Lake Edward at Crookwell. He purchased Golden Valley, a 100 acre property at the foot of Mt. Gingenbullen, and in 1870 built Golden Vale, a large two-storey sandstone residence.

The rugged area west from Hoddles Crossroads gradually became more densely settled, with properties extending further out along Tugalong Road that wound northward almost to the junction of the Wingecarribee and Wollondilly Rivers.

There were timber mills at Millview, Golden Valley, Sandy Flat, Hickory Hill, Foxgrove (now Cobbadah) and in the Bangadilly Road area. A number of coal mines opened, the main one being on Foxgrove Rd.

Timber clearing opened the land for pastoral use and attracted more settlement.

Eva Connor operated the Canyon Leigh Post Office and a small store at Kebarbin until 1949. Then another grandchild of Benjamin Murray, Horace Quigg and his wife Grace relocated it in 1950 to their Millview property at the corner of Foxgrove Road, situated nearer to Hoddles Crossroads.

At the time there was a spate of fatal accidents in the more isolated areas. Three young men died before help could reach them because people had to travel, often long distances, to alert Grace or Horace who would phone and then meet the ambulance and guide it to the accident site.

Grace pressured the authorities to improve the situation and in May 1950 a telephone exchange was installed at the Quigg's property. A party line was put in often strung between trees and progressively extended along Tugalong Road.

Further, as a result of a campaign led by Grace in the 1970s, the district's first country automatic exchange was installed.

The name Canyonleigh was assigned by the Geographical Names Board on 23 January 1970 following advice from the local council. This upset those locals who preferred Canyon Leigh, but in time the name was accepted.

In the 1990s the Tugalong Road corner became the area's hub as the Canyonleigh Community Hall, a general store and bush fire brigade facilities were located there.

Canyonleigh roads are still often graced by the site of local residents taking their leisure on horseback or with horse and sulky.



Queens Arms Inn: built at Hoddles Crossroads; owner John Stagg at front with family members, late 1800s. Excavations for the Hume Freeway and its north-bound Berrima exit destroyed any remaining evidence of this inn's existence.



At Black Horse Farm on Hume Highway - Florence Quigg selling apples to passers-by circa 1930s

Thanks to Grahame Tooth of Bundanoon and Wendy Quigg of Canyonleigh for historical information and photos.

DIARY DATES

THURSDAY	11 JUL	Management Committee Meeting	
THURSDAY	25 JUL	Monthly General Meeting	2:00pm at the Historical Society
THURSDAY	8 AUG	Management Committee Meeting	
THURSDAY	22 AUG	Monthly General Meeting	2:00pm at the Historical Society
THURSDAY	12 SEP	Management Committee Meeting	
THURSDAY	26 SEP	Monthly General Meeting	2:00pm at the Historical Society

If undelivered return to:
Berrima District Historical & Family History Society Inc
PO Box 131
MITTAGONG NSW 2575
Berrima District Historical & Family History Society Inc
Newsletter
Print Post Approved
PP100001055

**SURFACE
MAIL**

**POSTAGE
PAID
AUSTRALIA**

THE BERRIMA DISTRICT HISTORICAL AND FAMILY HISTORY SOCIETY NEWSLETTER

is proudly supported by the following organizations that encourage the work of our Society in collecting,
preserving and maintaining the history of the Southern Highlands.

*Boral
Hypercet Printing
Retravision/Home Hardware, Mittagong
Springetts Arcade*